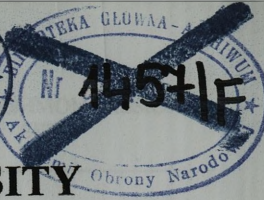
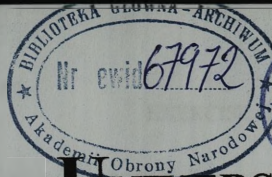


Grey Scale #13



A 1 2 3 4 5 6 M 8 9 10 11 12 13 14 15 B 17 18 19

57



# NATIONAL DEFENCE UNIVERSITY

0000 20  
- Egz. nr ...



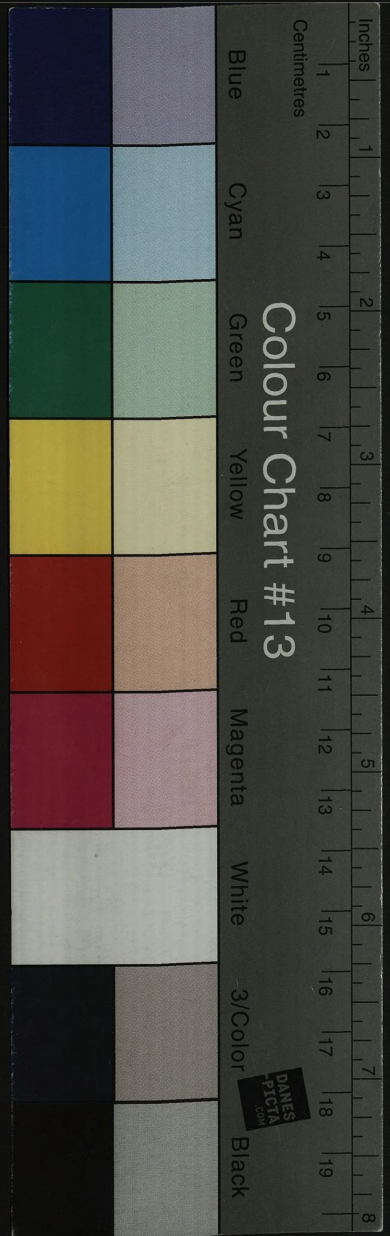
## EXERCISE COMMON MISSION

### SET 2

### INITIAL DATA

MAY - JUNE 2004

# 67972



**SET 2  
INITIAL DATA**

**LIST OF CONTENTS**

- Part 2.1. BOUNDARIES
- Part 2.2. GEOPOLITICAL SITUATION
- Part 2.3. ALLIANCE COUNTRIES
- Part 2.4. SUMBIA – CANDIDATE STATE FOR THE ALLIANCE
- Part 2.5. NON-ALLIANCE STATES – PARTIES OF THE CRISIS SITUATION

**Part 2.1.  
BOUNDARIES**

**SET 2  
INITIAL DATA**

**LIST OF CONTENTS**

- Part 2.1. BOUNDARIES
- Part 2.2. GEOPOLITICAL SITUATION
- Part 2.3. ALLIANCE COUNTRIES
- Part 2.4. SUMBIA – CANDIDATE STATE FOR THE ALLIANCE
- Part 2.5. NON-ALLIANCE STATES – PARTIES OF THE CRISIS SITUATION

## Annex : 1. MAP OF THE REGION

Exercise area comprises region of Central Europe, the Baltic Sea included.

For training purposes, the following states have been created:

No.	Country (capital)	Overall length of borders km	Comprising land borders with neighboring countries (km)	Maritime borders: (km)
1	<b>BALTA</b> (DRAMME)	3 610	<b>KOLLA – 660;</b>	2 950
2	<b>BRYTA</b> (DIJON)	4 310	ADRIA – 490; BURGIA – 360; HOWLAND – 750; IBERA – 510;	2 200
3	<b>BURGIA</b> (KILBURG)	2 540	BRYTA – 360; HOWLAND – 570; LENDIA – 290;	1 320
4	<b>HOWLAND</b> (REGENBURG)	3 620	ADRIA – 1 040; BRYTA – 750; BURGIA – 570; LENDIA – 440; PANON – 650; POMORIA – 170;	-
5	<b>IBERA</b> (TARRAGO)	4 410	BRYTA – 510;	3 900
6	<b>LENDIA</b> (NAPOZA)	2 695	BURGIA – 290; HOWLAND – 440; MONDA – 480; PANON – 625; SUMBIA – 410;	450
7	<b>PANON</b> (ORADEA)	2 775	HOWLAND – 650; LENDIA – 625; MONDA – 480; POMORIA – 1 020;	-
<b>Total:</b>		23 960	13 140	10 820
8	<b>SUMBIA</b> (ALTUS)	2 070	JAPALA – 670(including 90 km exclave); LENDIA – 410; MONDA – 340;	650
<b>Total:</b>		2 070	1 420	650
9	<b>BELAND</b> (BORAS)	6 770	JAPALA – 990; KOLLA – 620; MONDA – 680; NORDIA – 1 440; POMORIA – 120; SAMARA – 1 600;	1 320
10	<b>SAMARA</b> (BUZUK)	9 140	BELAND – 1 600; NORDIA – 1 440; POMORIA – 450; pozostałe państwa – ok. 3 200 km;	2 450
11	<b>JAPALA</b> (TARTA)	2 690	BELAND – 990; MONDA – 350; SUMBIA – 670 (including 90 km enclave);	744 (64)
12	<b>POMORIA</b> (PACAU)	4 190	ADRIA – 930; BELAND – 120; HOWLAND – 170; MONDA – 450; PANON – 1 020; SAMARA – 450;	1 050
<b>Total:</b>		22 790	17 290	5 564
13	<b>ADRIA</b> (BOLZAN)	unknown	BRYTA – 490; HOWLAND – 1 040; POMORIA – 930; others – unknown	unknown
14	<b>CELTA</b> (LONDA)	unknown	-	unknown
15	<b>KOLLA</b> (KITTLA)	unknown	BALTA – 660; BELAND – 620; NORDIA – 160;	unknown
16	<b>MONDA</b> (SARA)	2 780	BELAND – 680; JAPALA – 350; LENDIA – 480; POMORIA – 450; PANON – 480; SUMBIA – 340;	-
17	<b>NORDIA</b> (TYWKAR)	unknown	BELAND – 1 440; KOLLA – 160; SAMARA – 1 440; others – unknown	unknown
<b>Total:</b>		unknown	unknown	unknown
<b>GENERAL*:</b>		48 820	31 850	17 034

*Annex 1. Part 2.1.*

**PHYSICAL MAP OF THE AREA**



## Part 2.2. GEOPOLITICAL SITUATION

- Annexes : 1. Political map  
2. Ethnic minorities map

For the training, seventeen appliqué state structures have been created. Territorially, those states have been localized in Europe. The boundaries and assumed political structures are purely hypothetical and have no reference to the reality.

### I. ALLIANCE COUNTRIES

#### 1. GENERAL INFORMATIONS

The ALLIANCE, with the name of SECURE EUROPE, was created in the fifties in the previous century. It comprises states with the democratic forms of government and territories situated in the Western and Central-Eastern part of Europe. Those states are bound with political-military treaty, which embraces i.a. common planes of operation in case of the threat emergence. The real members, with full rights, are the following countries: BALTA, BRYTA, BURGIA, HOWLAND, LENDIA, IBERA and PANON.

ALLIANCE has open character, which is manifested i.a. by its readiness for acceptance of new members. The access condition, for the country from outside the ALLIANCE, is the stable political and military situation manifested i.a. by democratic form of government and civilian control over armed forces.

The entrance of new state to the ALLIANCE does not limit its sovereignty in any aspect.

### II. SUMBIA AS A CANDIDATE STATE FOR THE ALLIANCE

#### 1. GENERAL INFORMATION

The candidate state for the ALLIANCE is SUMBIA. It is situated North-East from LENDIA and MONDA. The SUMBIA's territory lies on both banks of the middle course of the river of Niemen. It is a mid-size country with area of 169,350 sq. km.. It is inhabited by 10.075 millions. The capital city of SUMBIA is ALTUS. SUMBIA has non-homogenous nationality structure. The biggest concentration of non-Sumbian population is in south-eastern part of the country. The 580 sq. m enclave (part of JAPALA's territory) is situated in this region. SUMBIA

has the following ethnic minorities: BELAND's – 11,8%; JAPALA's (outside enclave) – 4,2%; LENDIA's – 2,1%, other – 1,5%. They constitute 19,6% of the country population.

The settlement of the BELAND minority on the SUMBIA's territory has been caused mainly by economical reasons and taken place mainly due to BELAND's social-economic crisis at the beginning of the previous century. Additionally, part of the BELAND's ethnic minority remained in this country after period of SUMBIA's annexation by BELAND.

Despite regaining independence in the XX century, SUMBIA remained in the zone of BELAND's political and economic influence. Full independence and sovereignty has been won only after political transformation and period of European societies pursuit for national independence at the end of the eighties in XX century. These facts have caused the weakening of initially strong economic and political-military dependence from the old protector - BELAND. Then, the process of social life democratisation started in SUMBIA along with transformation to the free-market economy. SUMBIA became also more and more active subject in the system of the international economic and political co-operation. It also established partnership economic and political relations with ALLIANCE states. Transformation of the form of government serves good political stabilisation of SUMBIA and is the factor imparting dynamism to the economic life of the country.

The President, Prime Minister and Parliament Speaker of SUMBIA has submitted the proposal for country access to the ALLIANCE. Their proposal has met with approval of all seven ALLIANCE member-states.

## 2. DETAILED INFORMATION

SUMBIA is a developed country, as far as its economic situation can be taken into account. Apart from mining industry, with mainly oil, natural gas, coal and uranium mines, it also has many modern electronic and shipbuilding enterprises. The special significance to the state economy presents the gas pipeline, which is used to deliver natural gas to ALLIANCE states. At the end of the last century, up to the eighties, this pipeline has also been used by BELAND for natural gas transport. The other energy source, important for SUMBIA, is the nuclear power plant situated in the vicinity of the border with JAPALA. SUMBIA has also modern agriculture and agricultural-food product industry. Other important branches of SUMBIA's economy are trade and tourism. Reforms and investments in the economy have made this country significant exporter of many modern products, currently in wide demand in Europe. Positive situation of the SUMBIA's economy caused Gross Domestic Product increment. It also stabilised its social-economic situation. At the end of the eighties, SUMBIA left the BELAND's political-economic zone of influence. It was the time when it won sovereignty and subjectivity in foreign policy. Then, it has also initiated many successful economic reforms.

As to the political situation, SUMBIA has democratic-parliamentary form of government. The main political group is the Democratic Party of SUMBIA (DPS). In recent elections, this party has won the parliamentary majority. Currently, President and Prime minister are members of this particular party. One of the basic points of DPS programme is resolution to strive for full co-operation within the Economic Union of Europe and international security system, like SECURE EUROPE ALLIANCE.

Foreign policy of SUMBIA is aimed at maintaining of good relations with all neighbouring countries. Up to the end of previous century, relations with BELAND have caused some serious problems in foreign policy of the country. In bilateral relations, many political tension periods occurred, which sometimes led even to freezing of diplomatic relations. The XXI century brought however warming of bilateral relations and their relative normalisation. Despite

good trends in foreign policy, on domestic arena, in the internal policy of the country, some general, democratic value system breakdowns and growth of negative phenomena occurred. Those phenomena have not been able however to reduce significance of achievements of this country, as building and consolidation of its sovereignty, economic development and social structure reforms. Problems escalation, mainly in last two years, could however pose serious threat for situation in this region of Europe.

All those negative phenomena in SUMBIA can be described as "traditional" ones, for countries in transformation. They usually accompany rapid social-economic and political reforms. Recently, in many regions of SUMBIA, mainly those with companies, which earlier had close links with BELAND's economy, rapid growth of unemployment rate could be noticed. Additionally, modern technologies and high productivity in new production facilities are not the factor, which helps the unemployment rate decrement. It even fosters the enlargement of poverty zone. The poverty can be noticed most easily in this part of the society, which has not been able to adapt to modern economy demands. The dangerous phenomena in the economy are expanding "shadow economy" and noticeable, but not eagerly fought, economic crime. Both decrease state budget income and belief in trustworthiness of political institutions of the country.

One of the results of low state income, in relation to necessary expenses for social security system, education system, National Health Service, Police and armed forces, is the limitation of budget appropriations. It leads to growing social discontent. It is also more and more difficult to meet aspirations and demands of some social and professional groups, awoken at the beginning of social and political transformation period.

Political-economic and military integration of SUMBIA with ALLIANCE states is accompanied by intensive cultural exchange. Currently, SUMBIA's citizens readily leave the country to start studies abroad and find job in Western-European countries. In SUMBIA there are also more and more enterprises and businesses with ALLIANCE countries citizens' ownership.

In SUMBIA's media, dominated mostly by foreign capital, mainly from ALLIANCE countries, the Western way of living, with consumption as the main aim and aspect of human life is promoted. New value systems and new social life patterns are being given wide publicity. Due to low capabilities of budgetary support, many prestigious and popular cultural institution of SUMBIA, like National Theatre, State Cinematography Company, Opera and National Museum are on the brink of collapse. After privatisation, those institutions often prefer commercial undertakings, frequently remote from traditional national values. It widens social discontent and gives additional arguments to nationalistic groups, criticising government actions.

### III. NON ALLIANCE STATES ENGAGED IN THE CRISIS SITUATION

#### 1. BELAND

BELAND - is a country situated in Eastern Europe. Its territory covers 968,640 sq. km. It is a state with 44,880 thousands inhabitants. Capital city of BELAND is BORAS.

Not long ago, every country on the Western border of BELAND was under its strong political influence. Economic dependence and close military ties have supported BELAND's political dictate. BELAND and neighbouring countries had formed single political-military and economic system. Big military and economic potential of BELAND gave it dominant position in this system. Also form of preferred political culture prompted this country to favour solely its own interests, often secured at cost of partner states. Aware of its domination, BELAND often limited right for sovereignty of neighbouring countries, members of the single political-military and economic system.

Dozen or so years ago, due to internal crisis in BELAND and aspirations of single system member states for independence, many of them won sovereignty. They started economic reforms, transformation of the political system and as a result became fully democratic countries. Since that time they are true members of the democratic states family.

Three countries, BURGIA, LENDIA and PANON, from the old BELAND's zone of influence, entered ALLIANCE, which was not so long ago perceived by BELAND as the main threat for its security. Recently, similar activities have been taken by SUMBIA. This country was also once within BELAND's zone of political influence. On the Western border of BELAND only one country remained with close political-military and economic relations with old power. It is JAPALA.

BELAND has put the internal crisis, which had been the main factor influencing old political-military system decomposition, under control. Currently, it is a country building foundations of democracy and free-market economy. It maintains good relations with European countries, also with ALLIANCE member-states. It also became a signatory of all world peace conferences, Hague and Geneva Conventions. Apart from big economic potential, BELAND has vast national resources, oil, natural gas, timber and lot of different mineral deposits. National resources deposits fully meet demands of BELAND's economy and industry. Huge national resources surplus is exported to other countries, including member-states of ALLIANCE SECURE EUROPE.

Apart from mining enterprises, this country has developed armaments industry, particularly in the area of military aircraft and missile production. BELAND also has weapons of mass destruction and capabilities for its production, one of the greatest the world. The other significant branches of industry in BELAND are electronic and engineering industries. In heavy industry only small growth can be noticed at the moment, due to small demand for its products in this part of Europe. Additionally, BELAND becomes more and more important ready market for industrial articles produced in ALLIANCE's countries. BELAND eagerly strives for help in economic reforms and access to modern technologies to increase effectiveness of its economy.

Despite beneficial political-economic transformations, BELAND is still an unstable country, as far as political situation is concerned. Extremist, nationalistic groups more and more courageously attack liberal groups, currently exercising power, for bringing the single political-military system, under the dominance of BELAND, to collapse. They demand restoration of the old empire. Nationalists have significant public support, mainly in regions with high unemployment rate. They also have close connections with the armed forces and security forces. In these groups there is still a strong discontent with political transformation process. Due to political and social changes both army and security forces have lost its dominant position in the country. In the parliament opposition parties, to build-up its position, often use postulates and ideas similar to those propagated by nationalistic groups.

Strong nationalist's influence limits the range of political-social reforms, which are carried out by the government. To save power and keep BELAND on the track to parliamentary democracy and free-market economy, government has to take into account postulates of opposition and other parliamentary parties, dominated by nationalistic forces. In other case, there would be a threat of parliamentary crisis and early elections, which can be a success for nationalists.

In the country, due to political weakness of the government and parliament, armed forces win more and more autonomy. Nationalistic parties, under banner of armed forces prestige and old splendour restoration, aim at deprivation government and parliament of democratic control over armed forces.

Activities of nationalists have significantly intensified after SUMBIA government's expression of desire to enter ALLIANCE and acceptance of this proposal by ALLIANCE member states. ALLIANCE enlargement process and ALLIANCE as such is treated in nationalist's propaganda as the main threat for military security of BELAND. Nationalists, with significant funds at their disposal, and supported by political and economic lobby, linked with armed forces, organise diversion and propaganda aimed at ALLIANCE states.

Parties with the nationalistic shade try i.a. to make ALLIANCE enlargement impossible. Their activities are focused mainly on support to groups able to destabilise social-political situation in the candidate state. It is estimated that destabilisation of the internal situation in ALLIANCE states could even lead some countries to abandonment of ALLIANCE structures and can also be a factor allowing insertion of such country under BELAND's influence.

Legitimate authorities of BELAND treat reluctantly ALLIANCE enlargement process, especially in reference to countries, which had been not long ago under political-military and economic BELAND's dominance. Officially, they don't protest but however try to prompt governments of those countries, through political activities, to withdraw their ALLIANCE access proposals. For example, they don't support nationalist's activities in SUMBIA, but also don't do anything to stop their illegal and rowdies activities in this country.

Aiming at counteracting ALLIANCE enlargement process, BELAND has also started attempts to create antagonistic political and political military organisation in the form of the BESAJA Federal Community. This federation is to comprise, under political leadership of BELAND, the following countries: POMORIA, JAPALA and SAMARA. So far, due to differences in principles of federation functioning, BESAJA has not been created. The only one close, federal type relation emerged between BELAND and SAMARA. Despite declarations of mutual support and expression of desire for federalisation, POMORIA has not joined the federation and tried to keep its individual character, in reference both to BESAJA and ALLIANCE countries. High readiness for federation has been expressed by JAPALA, but still there is no BELAND and SAMARA decisions in relation to this country. Despite this, JAPALA is ready to take any, even unpopular, efforts, in relation to ALLIANCE countries to strengthen, through this, its pursuit for federation.

BELAND has ratified "European Human Rights Convention" from 1950 and additional protocols. It has also ratified Geneva Conventions from 1949 and "Civic and Political Rights Charter" from 1966. It doesn't ratified additional protocols from 1977 to 1949 Geneva Conventions and signed convention "On Prohibition of Application, Storage, Production and Transfer of Anti-Personnel Mines and their Destruction".

## 2. JAPALA

JAPALA is the mid-size country under strong political influence of BELAND. It has the territory of 120,000 sq. km and is inhabited by 12 millions citizens. The main political centre of JAPALA is the capital - TARTA.

Despite social-political transformation process and economic reforms in neighbouring countries, which not long ago formed single political-military and economic system with JAPALA, only some insubstantial political system reforms has been carried out in the country. Acting parliament has no significant influence on activities of state executive organs, which are dominated by President. Civic rights are reduced to minimum, there is no openness in the public life and censorship still exists.

JAPALA carries out politics of constraint in relations with democratic European countries. Vivid political and economic relations are maintained only with BELAND. The government of JAPALA openly criticises countries from old political-military system for

direction of reforms and political twist towards ALLIANCE. It is reluctant towards liberal reforms started in BELAND and maintains very friendly relations with nationalistic groups in this country. Lack of reforms and backwardness of the JAPALA's economy is a reason of its small effectiveness and low standard of living of this country society. Common problems are food supply and other consumer goods shortages. However JAPALA has relatively big armed forces and internal security apparatus, which are additional burden for the weak economy.

Government propaganda promotes egalitarian society model, ardent in loyalty to its President. All economic problems are attributed to hostile ALLIANCE activities, which wants to overthrow legal authorities of JAPALA to exploit natural resources of the country. Due to strict censorship and foreign media information blockade, it is a main way of social-political life event categorisation. Despite the situation that JAPALA's population has the harshest conditions of existence among countries of the former single political-military system, outbreaks of social unrest are very rare, as dauntless political disputes in the parliament. Due to propaganda and intimidation by public security institutions, government of JAPALA has strong support of citizens.

To support its policies, authorities use outbreaks of social unrest and negative aspects of economic and political reforms in neighbouring countries in the propaganda. They express severe criticism on the tries to incorporate SUMBIA into ALLIANCE. They indicate that this political direction is at odds with the will and interest of the SUMBIA's nation. The JAPALA's Parliament Speaker, on President proposal, has approved the establishment of the Social Support Front for the Nation of SUMBIA. This organisation started collection of clothing, food and money for SUMBIA. Also some refugee camps are being prepared. Material and finance assistance is transferred to nationalistic groups in SUMBIA, which use it in its destructive activities. Within the Front framework, armed forces of JAPALA probably support terrorist groups, connected to extremist, nationalistic organisations. With the help of nationalistic parties from BELAND also some groups of volunteers are being trained to carry out diversionary acts on the territory of SUMBIA.

President of JAPALA has stated, in his speech broadcast by state television, that he is very worried with situation in SUMBIA. Added that his country assumed the position of no-interference in internal problems of its neighbours. Emphasised that his country would only start humanitarian assistance to reduce suffering of the brotherly nation of SUMBIA. He also expressed his conviction that ALLIANCE countries also wouldn't interfere in the internal situation in SUMBIA. He assured that stabilisation on the region was be provided by strong armed forces of JAPALA, which wouldn't allow the conflict escalation.

### 3. SAMARA

SAMARA is the easternmost European country. Its Western border overlaps with the Asia-Europe boundary. This country is the biggest, as far as territory is concerned, European state. It covers 900,000 sq. km. It is inhabited by 90 millions of people. The capital city of SAMARA is BUZUK.

This country has well developed armaments industry, which specialise in fighter aircraft and helicopters production and also in armament and equipment for air force. The other important area of SAMARA's armament industry is small arms and other weaponry, mainly conventional armament, production. It has nuclear weaponry. However, several years ago its production was stopped and some production lines sections dismantled.

Not taking into account the armament industry, SAMARA can be categorised as mid-developed country, referring to industrial development level. It also has well-developed electronic and manufacturing industries. Its heavy industry develops slowly. It happens due to

small demand for its products in this region of Europe, like in the case of BELAND. Stagnation, even decrement of trade with neighbouring countries (excluding BELAND), leads to rate of unemployment increment, which can be a potential source of social unrest in the future.

Better situation is in agricultural, food product area. However, exports of such articles only insignificantly improve foreign trade balance.

Unfavourable economic situation additionally increases the budget deficit, which is mainly a result of bad management and corruption in subsequent governments. Many social-economic reforms have been stopped. They could have improved economic situation of the country, but due to lack of financing they had not been put into operation. Additionally, hard currency shortages, needed for purchase of consumer goods, leads to uncontrolled price increase and economic stagnation aggravation.

Up to eighties in the XX century, SAMARA had tight political and economic relations with BELAND. This kind of situation is, to some extent, being restored now. One of the symptoms is federalisation with BELAND within the BESAJA Community.

Refederalisation with BELAND became possible due to new political situation and conditions in SAMARA. Last century, in the nineties, the form of government has been changed. The single party political system was abolished and replaced with multi-party, democratic form of the government.

In new political system, the head of state is the President. Up to 2000 he had full powers, both executive and legislative. They have been gradually reduced since 2001. It led to transfer of the centre of gravity to the head of the government, in case of SAMARA to chancellor. The presidential responsibilities have been reduced to those purely representative.

After recent elections, the chancellor post went to the National Party of SAMARA (NPS) representative. This group, rightist and nationalistic in nature, wants close co-operation with BELAND. This co-operation is to embrace all fields of political, economic and military life.

As to the military situation, SAMARA has strong and well-equipped armed forces. Recently, special emphasis has been placed, within their structures, on aeromobile forces development.

#### IV. NEUTRAL COUNTRIES

Countries preserving full neutrality are ADRIA, CELTA, KOLLA MONDA and NORDIA. They are not bound by any political-military ALLIANCES and don't manifest the sympathy towards any of above described states. They maintain diplomatic relations both with ALLIANCE states and also with countries aspiring to membership of BESAJA Federation, maintaining full neutrality conditions.

Those countries are situated in different regions of Europe and, with the exception of KOLLA and NORDIA, don't have common borders. They have different territory sizes. The biggest country is NORDIA with the territory of 935,000 sq. km. It is situated in north-eastern Europe. Its capital city is TYWKAR. NORDIA has common border with KOLLA (in the West), BELAND and SAMARA (in the South and Southwest)

The second largest neutral country is KOLLA, with territory of 492,100 sq. km. It is a country situated on the peninsula in the northwestern part of the European continent. It has 5,818.4 thousand citizens. Its capital city is KITTLA.

ADRIA has the territory of 381,700 sq. km. Its capital city is BOLZAN. It has 46,131.8 thousand citizens. ADRIA is situated in southern part of the European continent and has common borders with ALLIANCE countries.

CELTA has the territory of 439,700 sq. km. Its capital city is LONDA. CELTA has 40,924 thousand inhabitants. Territory of this country is situated on an island.

MONDA is situated in central-eastern Europe. Its territory is 164,200 sq. km. Its capital city is SARA. MONDA has 27,962 thousand inhabitants. This country has common borders with two ALLIANCE countries – LENDIA and PANON; and with SUMBIA, JAPALA and BELAND.

In respect to political situation, those countries have democratic form of the government. They are all so-called "old European democracies", with system close to political systems of ALLIANCE states, as far as form and character of the government is concerned. Additionally, they are high-industrialised countries (mainly with electronic industry - production of TV sets and computers) and have stable economic situation. They have also widely developed commodity exchange with other European countries.

In the nineties of the previous century, all these countries declared neutrality and left all political-military alliances. Due to not being the signatories of any political alliance, all above-mentioned countries have proclaimed themselves, in their political doctrines, in favour of peaceful settlement in case of international conflicts. In possible conflicts on the European continent, four of them (ADRIA, CELTA, KOLLA and NORDIA) declared the readiness to assume responsibility for organisation and initiation of mediations.

#### V. POLITICAL SITUATION OF THE ALLIANCE

The ALLIANCE consists of seven European states, including BURGIA, LENDIA and PANON, which were not long ago in the BELAND zone of influence. The ALLIANCE states are free-market, consolidated, democratic countries, stable both in economic and political sense. Apart from a uniform political-military system, they also form a common economic structure. Despite being a military and economic power, they exercise international policy peaceful in character. They have close and vivid economic ties with most of the countries eastwards of the ALLIANCE boundaries, helping them also to build the foundations of free-market economy and democratic society.

The ALLIANCE has particularly close ties with SUMBIA, which after leaving the BELAND zone of influence started the process of political transformation. Currently, this state is a democratic country developing free-market economy. The co-operation of ALLIANCE with SUMBIA yielded the crop of industry co-operation, many common economic initiatives and significant investments of the Western capital in SUMBIA economy. The ALLIANCE helps also in modernisation of SUMBIA's armed forces.

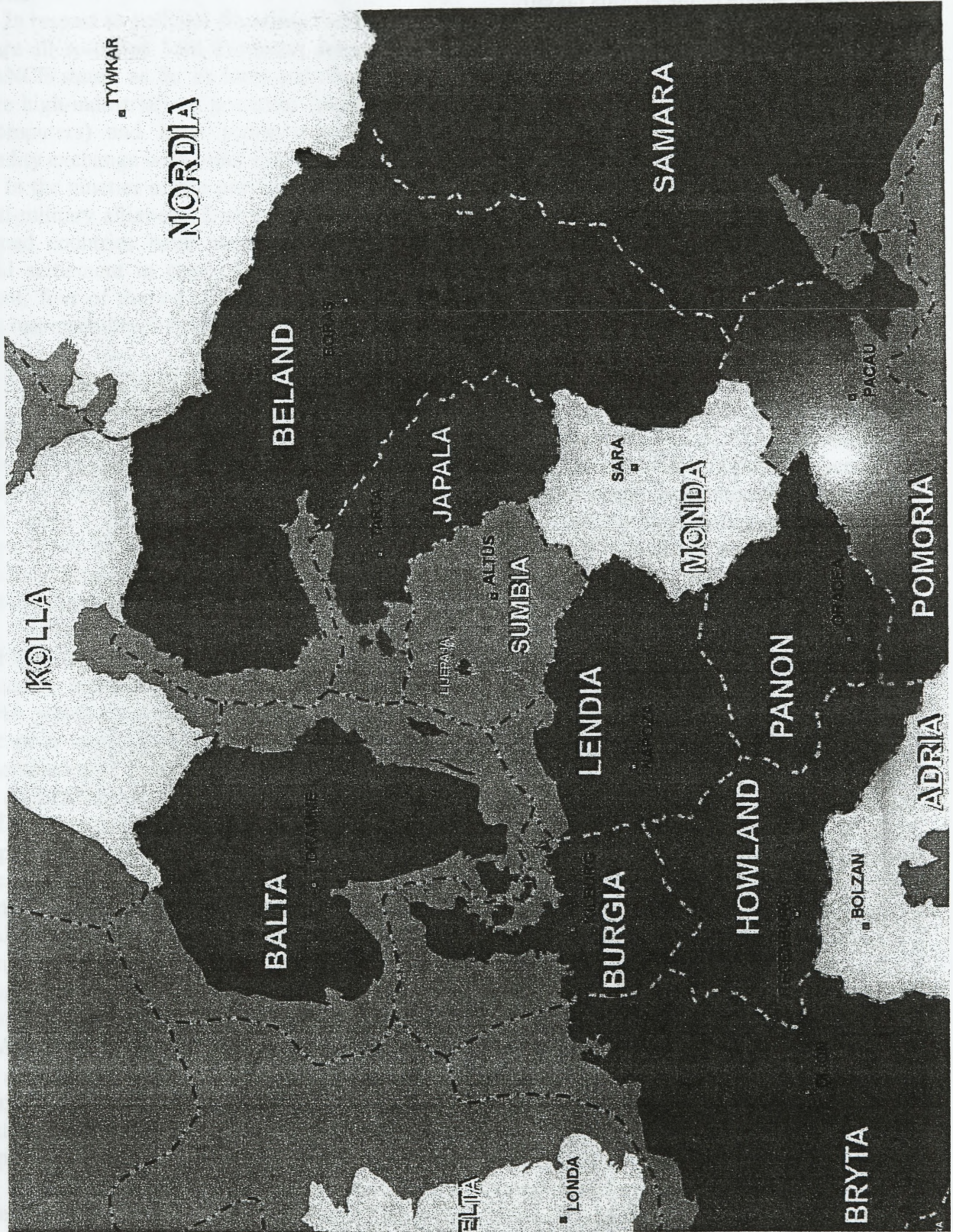
ALLIANCE states, since taking over the power in BELAND by democratic groups and start of political transformation, maintain vivid economic co-operation with this country. The geographical proximity and convenient transport conditions created the situation that BELAND became one of the most important raw materials suppliers to the ALLIANCE countries economy. It is also a significant ready market for sale of industrial and agricultural products. The ALLIANCE actively supports democratic BELAND authorities in building of free-market economy and foundation of the democracy. Due to human right abuse and despotic character of JAPALA's authorities, the ALLIANCE limited its economic and political contacts with this country. The bilateral relations had been reduced to rare diplomatic contacts. In JAPALA, there are no ALLIANCE political and economic institutions apart from diplomatic agencies.

ALLIANCE states unanimously supported SUMBIA's access to this political-military treaty organisation. They are however concerned with the situation, which emerged after publication of their attitude expressing readiness for acceptance of the new member. Initial political situation analysis indicates that events taking place in SUMBIA are caused by serious errors in SUMBIA's government policy and also by interference from neighbouring countries - i.e. nationalistic groups from JAPALA and BELAND. Now, the ALLIANCE faces

the problem, which can be expressed in the question: how to help SUMBIA and not to destabilise political situation in the region and keep relatively correct economic and political relations with BELAND and at the same time not provoke military reaction from the side of JAPALA due to the actions taken?

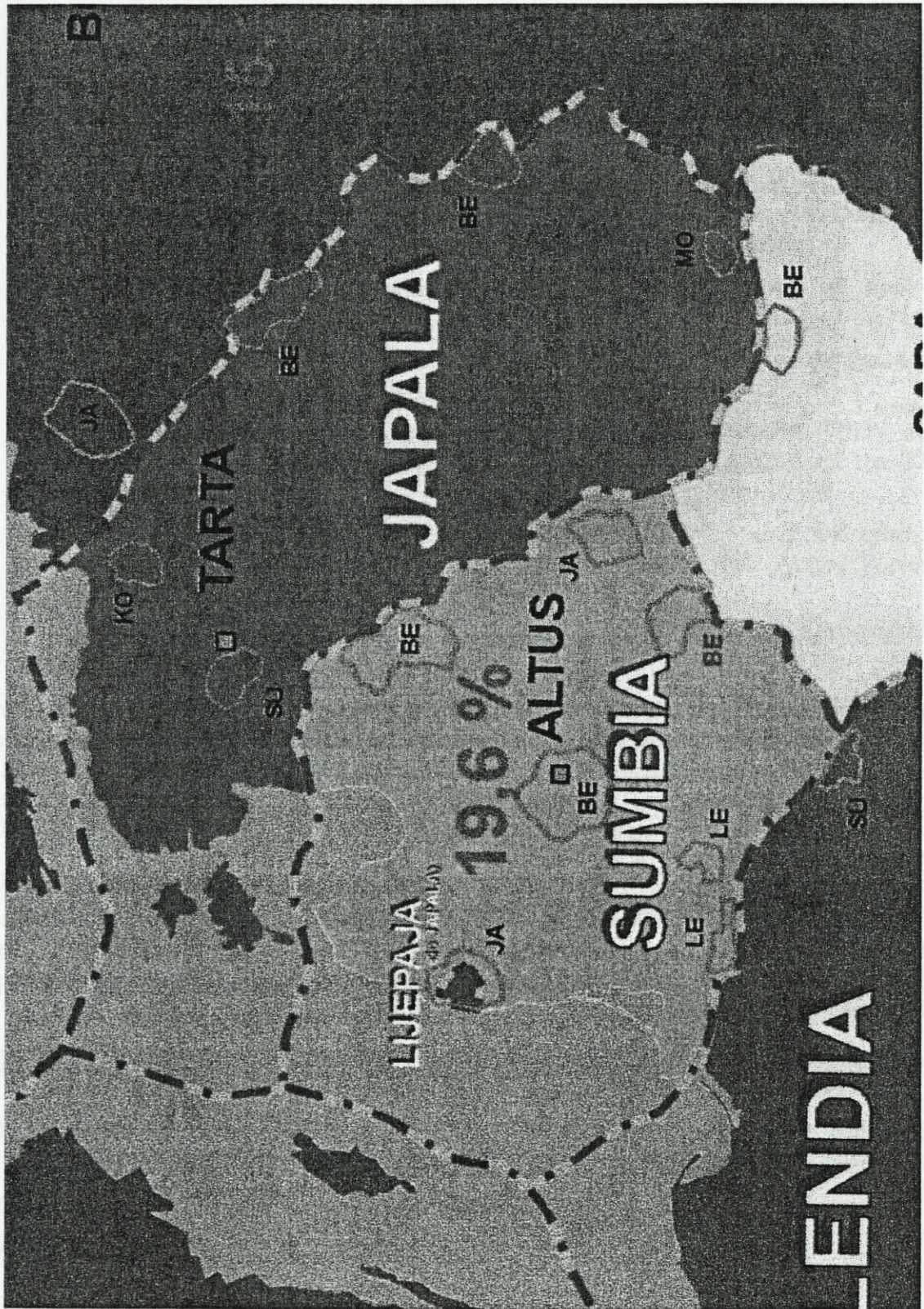
*Annex 1. Part 2.2.*

**POLITICAL MAP**



*Annex 2. Part 2.2.*

**MAP OF ETHNIC MINORITIES**



**Part 2.3.**  
**ALLIANCE COUNTRIES**

- Annexes : 1. LEGAL FOUNDATIONS OF THE ALLIANCE  
2. ORDER OF BATTLE – ALLIANCE FORCES  
3. ARMED FORCES OF THE ALLIANCE COUNTRIES

ALLIANCE COUNTRIES

The ALLIANCE, with the name of SECURE EUROPE, was created in the fifties in the previous century. It comprises states with the democratic forms of government and territories situated in the Western and Central-Eastern part of Europe. Those states are bound with political-military treaty, which embraces i.a. common planes of operation in case of the threat emergence. The real members, with full rights, are the following countries: BALTA, BRYTA, BURGIA, HOWLAND, LENDIA, IBERA and PANON.

ALLIANCE has open character, which is manifested i.a. by its readiness for acceptance of new members. The access condition, for the country from outside the ALLIANCE, is the stable political and military situation manifested i.a. by democratic form of government and civilian control over armed forces.

The entrance of new state to the ALLIANCE does not limit its sovereignty in any aspect.

## LEGAL FOUNDATIONS OF ALLIANCE<sup>1</sup>

1. Agreement between States – Parts of the SECURE EUROPE Treaty and other states participating in Partnership for Peace, on the status of their armed forces, and related Additional Protocol, concluded in KILBURG on the 19<sup>th</sup> of June 1995 (Parliamentary Registry of Law 1998, No 97, pos. 605)
2. Convention between the government of LENDIA, the government of BURGIA, and the government of HOWLAND on the Multinational Corps NORTH, concluded on the 5<sup>th</sup> of September 1998 (Parliamentary Registry of Law 2000, No 21, pos. 259).
3. SECURE EUROPE Treaty, concluded in DRAMME on the 4th of April 1949 (Parliamentary Registry of Law, No 87, pos. 970)
4. Agreement between States – Parts of the SECURE EUROPE Treaty, on the status of their Armed Forces, concluded in KILBURG on the 19<sup>th</sup> of June 1951.
5. Agreement on the status of the Organisation of the SECURE EUROPE Treaty, national representatives and international personnel, concluded in DRAMME on the 20<sup>th</sup> of September 1951.
6. Agreement between States – Parts of the SECURE EUROPE Treaty, and other States participating at the Partnership for Peace, on the status of their Armed Forces, and Additional Protocol, concluded on the 19<sup>th</sup> of June 1995.
7. Parliamentary of LENDIA bill on the ratification of the SECURE EUROPE Treaty, adopted on the 17<sup>th</sup> of February 1999.
8. Agreement on the status of the permanent representations and representatives of the third parties by the SECURE EUROPE Treaty Organisation, concluded in KILBURG on the 14<sup>th</sup> of September 1994.
9. Agreement between Parties of the SECURE EUROPE Treaty Organisation on the information security, concluded on the 6<sup>th</sup> of March 1997.
10. Agreement between Parties of the SECURE EUROPE Treaty Organisation on the provision of the technical information related to the defense purposes, concluded on the 19th of October in DIJON.
11. Agreement on the reciprocal safety of inventions related to the defense, in cases dealing with formal proposals, concluded on the 21<sup>st</sup> of September 1960 in DIJON.
12. Protocol on the status of the international commands, set up on the foundations of the SECURE EUROPE Treaty, conclude on the 28th of August 1952 in DRAMME.
13. Agreement between the Parts of the SECURE EUROPE Treaty on the cooperation on atomic information, concluded on the 18<sup>th</sup> of June 1964 in DRAMME.
14. Protection of the victims of war and culture goods.
15. Legal limitations of the armed conflict.

<sup>1</sup> Full versions – CD-Rom

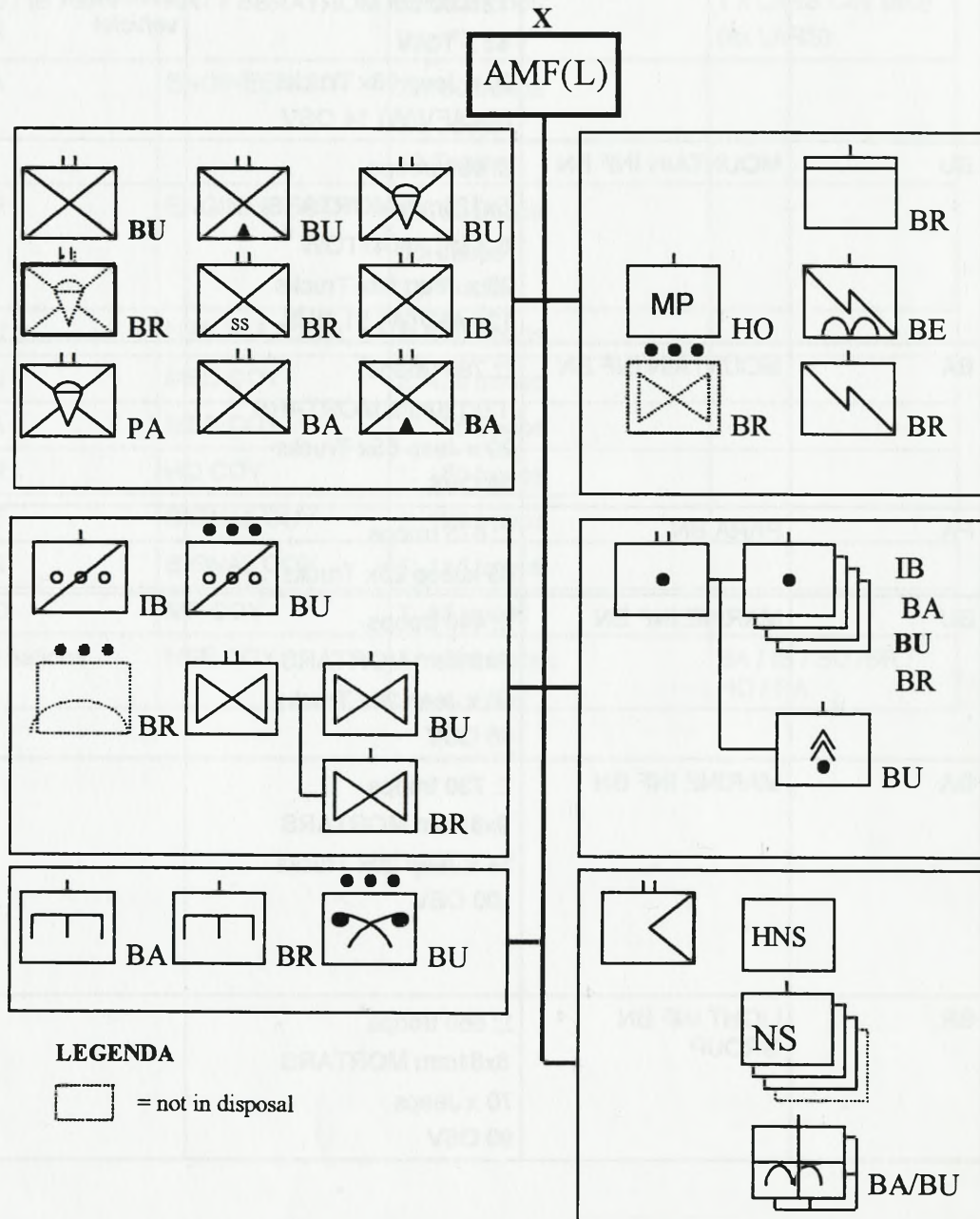
*Annex 2. Part 2.3.*

**ORDER OF BATTLE – ALLIANCE FORCES**

- Appendix:
1. ALLIED MANOUVRE FORCES (LAND) (AMF (L))
  2. MULTINATIONAL RESPONSE CORPS (MRC)
  3. ALLIED AIRMOBILE DIVISION (AAMD)
  4. LANDING FORCES
  5. AIR FORCES
  6. NAVAL FORCES

Appendix 1. Annex 2. Part 2.3.

1. AMF (L)<sup>2</sup>



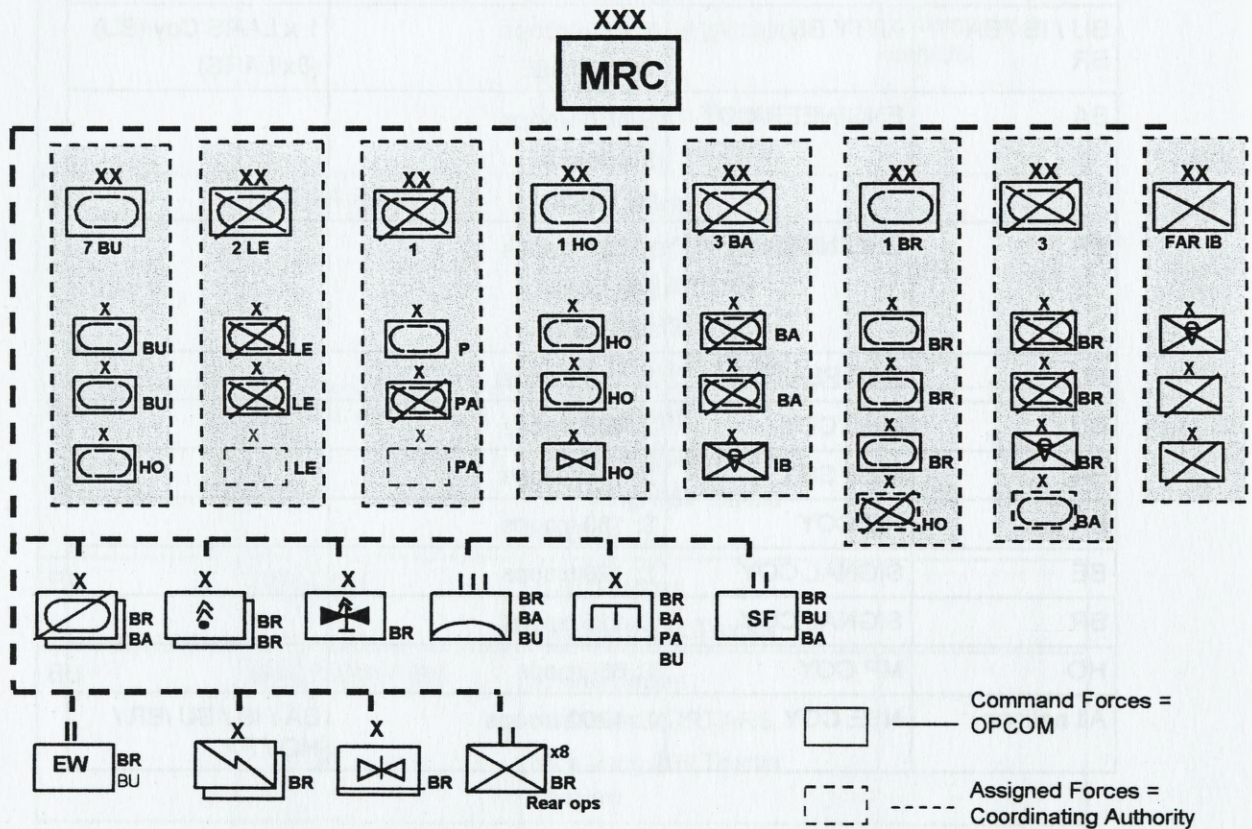
<sup>2</sup> AMF (L) – Allied Manoeuvre Forces (Land)

NATIONALITY	UNIT / TYPE	EQUIPMENT	REMARKS
BU	PARA BN	Σ: 592 troops 6 x 81mm MORTARS 18 x MILAN 30 x Jeep 52 Trucks	
IB	INF BN GROUP	Σ: 681 troops 12 x 60mm MORTARS 68 x TOW 20 x Jeep 98x Trucks 22x AFV(W) 14 OSV	*OSV <i>Oversnow vehicle!</i>
BU	MOUNTAIN INF BN	Σ: 659 troops 5x120mm MORTARS 8 x MILAN,4xTOW 28 x Jeep 58x Trucks 12x AFV(W) 51 OVS	
BA	MOUNTAIN INF BN	Σ: 780 troops 12x120mm MORTARS 20 x Jeep 65x Trucks 26 OVS	
PA	PARA BN	Σ: 675 troops 35 xJeep 25x Trucks	
BU	MARINE INF BN	Σ: 440 troops 9x81mm MORTARS 50 x Jeep 20x Trucks 46 OSV	
BA	MARINE INF BN	Σ: 730 troops 9x81mm MORTARS 34 x Jeep 20x Trucks 100 OSV	
BR	LIGHT INF BN GROUP	Σ: 660 troops 8x81mm MORTARS 70 x Jeeps 90 OSV	

NATIONALITY	UNIT / TYPE	EQUIPMENT	REMARKS
IB	RECCE COY	Σ: 130 troops 40 x Jeeps 10 Trucks	
BR/BU	HELICOPTER BN	Σ: 320 troops 50 UH	
BU / IB / BA / BR	ARTY BN	Σ: 680 troops 24x FH 105	1 x LARS Coy (BU) (8x LARS)
BA	ENGINEER COY	Σ: 130 troops 3 x Jeeps 12 Trucks	
BR	ENGINEER COY	Σ: 130 troops 3 x Jeeps 12 Trucks	
BU	NBC PLATOON	Σ: 130 troops	
BU	MED COY	Σ: 426 troops	
BA	MED COY	Σ: 105 troops	
BR	HQ COY	Σ: 180 troops	
BE	SIGNAL COY	Σ: 120 troops	
BR	SIGNAL COY	Σ: 115 troops	
HO	MP COY	Σ: 65 troops	
All nations	NSE COY	Σ: 1200 troops	BA / IB / BU / BR / HO / PA

Appendix 2. Annex 2. Part 2.3.

Multinational Response Corps (MRC)

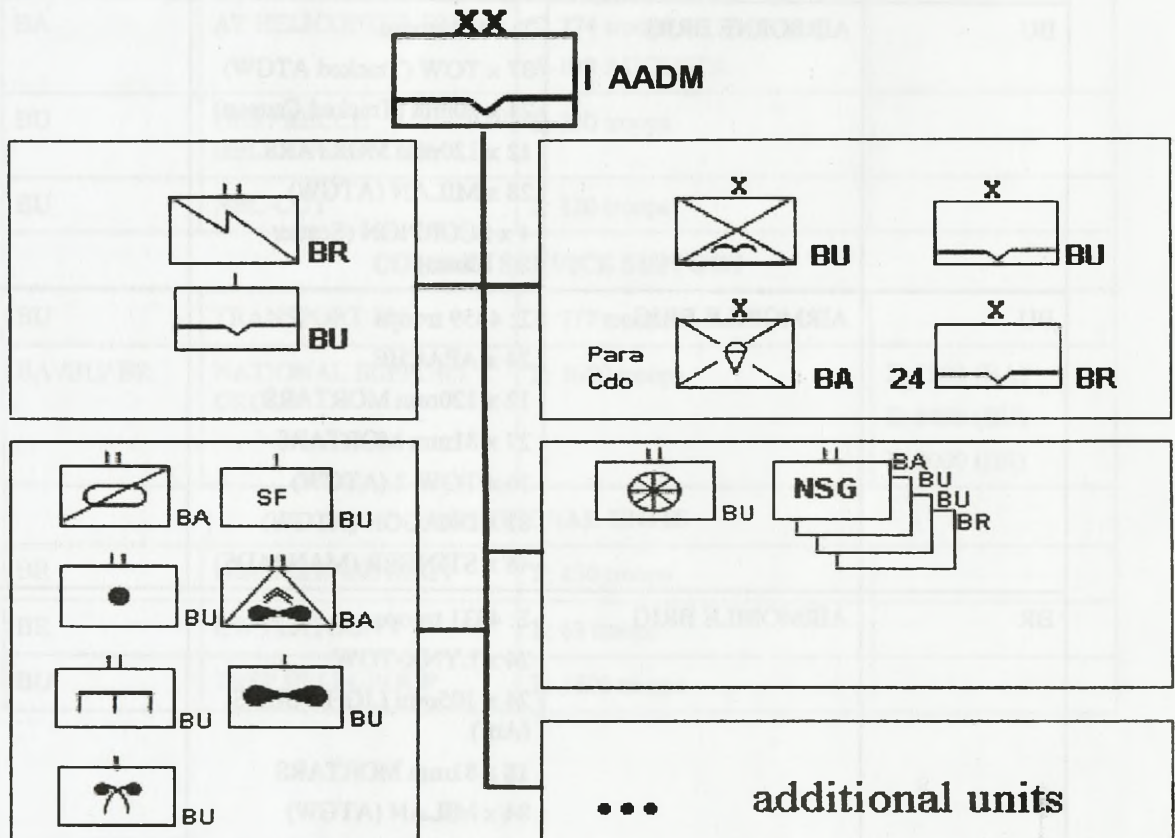


Unit	State	Location	Number and Type of Equipment	Remarks
<b>HQ ARRC</b>		RHEINDAHLEN		
Corps Units				
Recce Bde (BR)	BR			
Recce Bde (BA)	BA			
Signal Bde (BR)	BR			
Signal Bde (BR)	BR			
EW Bn (BR/BU)	BR/BU			
MRL Bde (UK)	BR			
MRL Bde (US)	BR			
AD Regiment (UK)	BR			
Engineer Bde				
Airmobile Bde (BR)	BR			
Special Forces Bn				
Air Army Bde (BR)	BR			
Inf Bn/RearOps (UK)	BR			
Strategic Air/Sea Lift	BR			
<b>Mech Div (BR)</b>	BR			ASSIGNED FORCES = COORD. AUTHORITY
Mech Bde (BR)	BR			COMMAND FORCES = OPCOM
Mech Bde (BR)	BR			COMMAND FORCES = OPCOM
Light Airborne Bde (BR)	BR			COMMAND FORCES = OPCOM
Armoured Bde (BA)	BA			ASSIGNED FORCES = COORD. AUTHORITY
<b>Armoured Div (BR)</b>	BR			ASSIGNED FORCES = COORD. AUTHORITY Dual Role in Central Region with BU Corps
Armoured Bde (BR)	BR			COMMAND FORCES = OPCOM
Armoured Bde (BR)	BR			COMMAND FORCES = OPCOM
Armoured Bde (BR)	BR			COMMAND FORCES = OPCOM
Mech Bde (HO)	HO			
<b>Inf Div (BA)</b>	BA			ASSIGNED FORCES = COORD. AUTHORITY
Inf Bde (BA)	BA			COMMAND FORCES = OPCOM
Inf Bde (BA)	BA			COMMAND FORCES = OPCOM
Light Airborne Bde (IB)	IB			ASSIGNED FORCES = COORD. AUTHORITY

Unit	State	Location	Number and Type of Equipment	Remarks
Armoured Div (BU)	BU			ASSIGNED FORCES = COORD. AUTHORITY
Armoured Bde (BU)	BU			COMMAND FORCES = OPCOM
Armoured Bde (BU)	BU			COMMAND FORCES = OPCOM
Armoured Bde (HO)	HO			
Inf Div (PA)	PA			ASSIGNED FORCES = COORD. AUTHORITY
Inf Bde (PA)	PA			
Armoured Bde (PA)	PA			
Mech Div (LE)	LE			ASSIGNED FORCES = COORD. AUTHORITY
Mech Bde (LE)	LE			
Mech Bde (LE)	LE			
Armoured Div (HO)	HO			ASSIGNED FORCES = COORD. AUTHORITY
Armoured Bde (HO)	HO			
Armoured Bde (HO)	HO			
Airmobile Bde (HO)	HO			
FAR (IB)	IB			
Mountain Inf Bde (IB)	IB			ASSIGNED FORCES = COORD. AUTHORITY WL contribution within the framework of Coordination Agreements and MC 313
Light Airborne Bde (IB)	IB			ASSIGNED FORCES = COORD. AUTHORITY WL contribution within the framework of Coordination Agreements and MC 313
Air Land Bde (IB)	IB			

Appendix 3. Annex 2. Part 2.3.

**Allied Airmobile Division (AAMD)**



NATIONALITY	UNIT / TYPE	NUMBER of TROOPS / EQUIPMENT	REMARKS
BA	PARA COMMANDO BRIG	Σ: 3569 troops 12 x 105mm (Art) 18 x 81mm MORTARS 66 x MILAN 18 x MISTRAL	1 x BN (AMF(L))
BU	AIRBORNE BRIG	Σ: 3333 troops 37 x TOW (Tracked ATGW) 24 x 20mm (Tracked Cannon) 12 x 120mm MORTARS 28 x MILAN (ATGW) 4 x SCORPION (Scatter Mines)	
BU	AIRMOBILE BRIG	Σ: 4459 troops 24 x APACHE 12 x 120mm MORTARS 27 x 81mm MORTARS 36 x TOW-2 (ATGW) 81 x DRAGON (ATGW) 48 x STINGER (MANPADS)	
BR	AIRMOBILE BRIG	Σ: 4631 troops 24 x LYNX-TOW 24 x 105mm LIGHT GUNS (Art.) 18 x 81mm MORTARS 84 x MILAN (ATGW) 36 x JAVELIN (MANPADS)	
<b>DIVISIONAL TROOPS</b>			
BR	SIG BN	Σ: 558 troops	provides: the Div communications and infrastructure (SATCOM, ZODIAC)
BU	HQ COY	Σ: 256 troops	provides: essential life support
BA	RECCE BN	Σ: 517 troops SCIMITAR (TRACKED VEHICLE)	

NATIONALITY	UNIT / TYPE	NUMBER of TROOPS / EQUIPMENT	REMARKS
BU	ARTY BN	Σ: 454 troops M-109 (155mm)	
BU	ENGINEER BN	Σ: 810 troops	
BU	SPECIAL FORCES COY	Σ: 130 troops	
BA	AT HELICOPTER BN	Σ: 274 troops A-109 AUGUSTA	
BU	OBS / RECCE HELICOPTER COY	Σ: 330 troops	
BU	NBC-COY	Σ: 120 troops	
<b>COMBAT SERVICE SUPPORT</b>			
BU	TRANSPORT BN	Σ: 777 troops	
BA /BU/ BR	NATIONAL SUPPORT GROUP	Σ: 7600 troops	Σ: 1200 (BA) Σ: 4400 (BU) Σ: 2000 (BR)
<b>ADDITIONAL UNITS</b>			
BR	AIR DEFENSE REGT	Σ: 450 troops	
BR	EW PLATOON	Σ: 63 troops	
BU	TRSP HELI GROUP	Σ: 1500 troops	

*Appendix 4. Annex 2. Part 2.3.*

**BR/BU Landing Force**

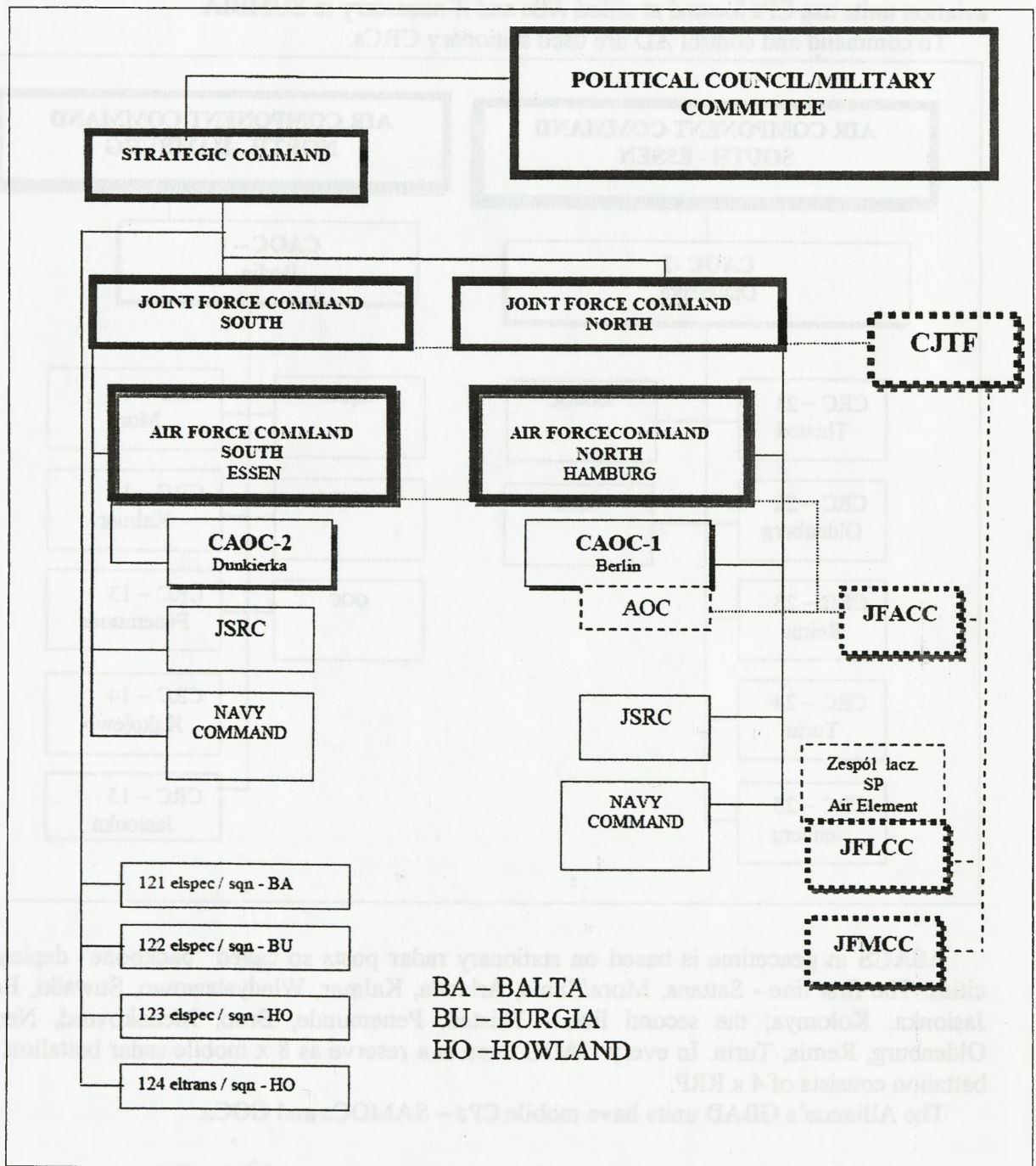
UNIT	NATION	LOCATION	Number/ Type of Weapon System	Remarks
<b>BR/BU Landing Force</b>			Personnel: 5487 (3200 marines 110 AFV, 13 LMTH)	
Bde Unit List				
HQ Coy & Signal Coy	BR			
Recce Coy	BR			
Recce Pl	BU			
AD Coy	BR/BU		BU: STINGER	One AD platoon from every nation
Arty Bn	BR/BU		BU- mortar 120 mm	BR: Arty Coy, BU: Mortar Coy
2 Eng Coys	BR			
AT Helo Squadron	BR			
AT Helo Squadron	BR			
Special Forces Coy	BR			
Special Forces Coy	BR			
Log Bn	BR			
Logistic Elements	BU			
Sea Landing Group	BR			
Sea Landing Group	BU		6 x LCVP	
<b>Cdo Bde Royal Marines</b>	BR			
Cdo Btl	BR			
Cdo Btl	BR			
Cdo Btl	BR			
<b>Cdo Btl</b>	BU		Appr. 600 troops	

*Appendix 5. Annex 3. Part 2.3.*

**ALLIANCE – Air Force**

**1. Air Command and Control structure.**

The Air Command and Control structure consists of operational and tactical levels. Operational level - two Air Forces Commands: NORTH and SOUTH. They are subject to Joint Force Commands – NORTH and SOUTH.



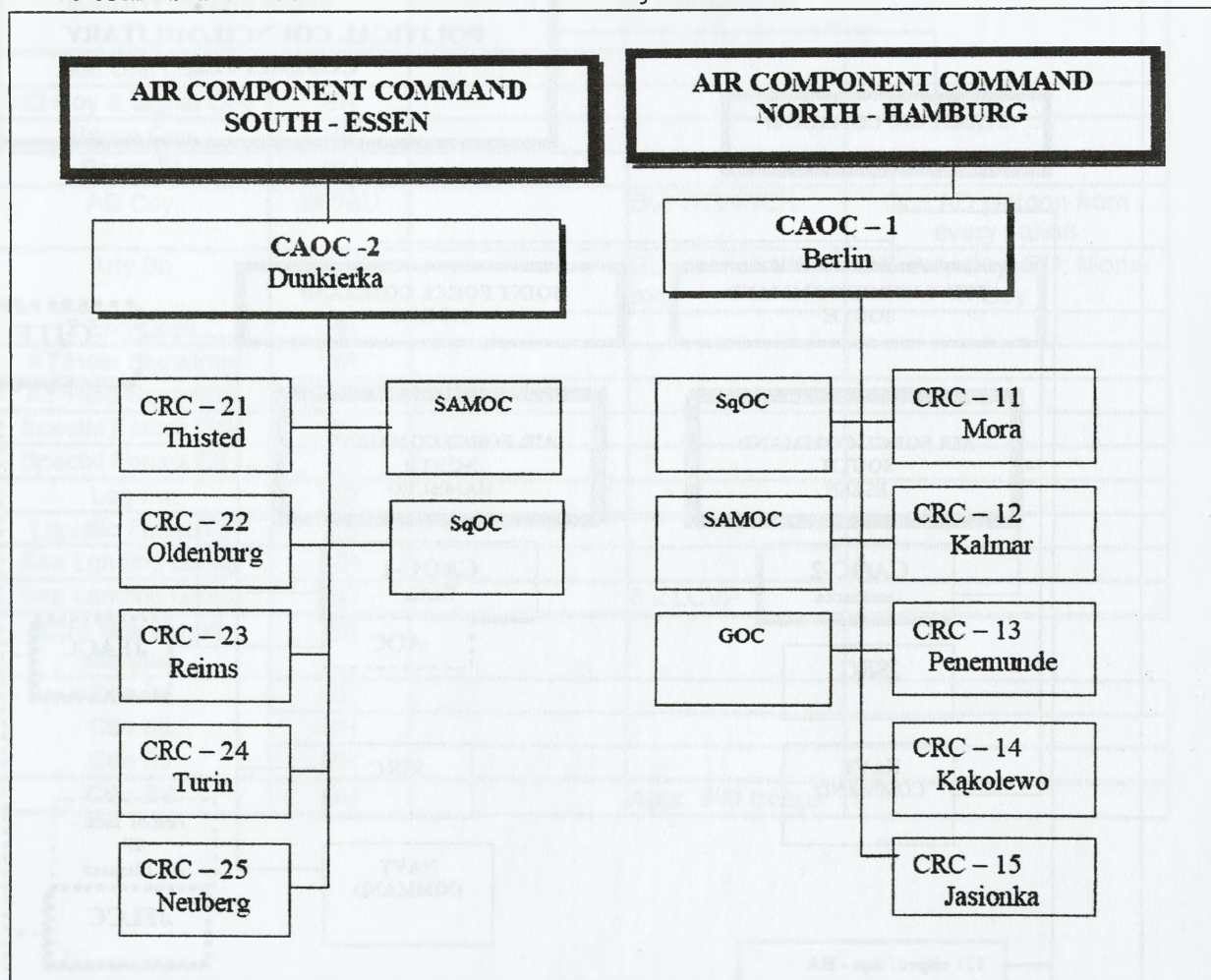
Tactical air C2 level consists of two bodies. The first which functionally provides detailed planning, tasking and coordination the air operations and the second CPs of execution levels (units).

CAOCs are the main (basic) planning and tasking body of Alliance at the tactical level. In this system are used stationary peacetime CPs. However in the wartime operations existing reserves allow to create mobile CPs for CJTF Commander and JFACC.

CAOC-1 contains the airspace of BALTA, BRUGIA, LENDIA, PANON and in the future SUMBIA (after entering the Alliance or after aggression of JAPALA). CAOC-2 contains the airspace of BRYTA and HOWLAND.

Every country in peacetime keeps Air Policing duties according to procedures. Tactical aviation units use CPs located at allied ABs and if necessary in SUMBIA.

To command and control AD are used stationary CRCs.



ASACS in peacetime is based on stationary radar posts so called “backbone” deployed in cities: The first line - Sattana, Mora/Silnia, Arlanda, Kalmar, Władysławowo, Suwałki, Bereza, Jasionka, Kołomya; the second line - Thisted, Penemunde, Brno, Mezokovesd, Neuberg, Oldenburg, Remis, Turin. In every CAOC there is a reserve as 8 x mobile radar battalion. Each battalion consists of 4 x RRP.

The Alliance’s GBAD units have mobile CPs – SAMOCs and GOCs.

**2. Logistic support.**

Alliance air logistic support uses own national assets which are stored at their bases. Logistic support of issuing units apart from their countries is ensured by national logistic units.

The Alliance's air reaction forces units have adequate logistic support to fulfill their tasks. Abroad, for them national logistic support ensures the continuity of operations within 6 months.

In the allied countries transit air bases are provided air cross servicing (ACS). Aircraft combat readiness is 85%, the other 90%.

The same combat readiness in GBAD is 90%. It uses civil - military service which is available according to SOFA, in the framework of HNS. After MOU there are preparing works to enable of gaining HNS at SUMBIAN territory.



It is located in Rostock and provides the necessary maritime expertise and support to joint operations. It consists of two main forces - STANAFOR and MCMFOR.

The Standing Naval Force (STANAFOR) and Mine Countermeasures Force (MCMFOR) are the main naval entities that participate in a series of scheduled (MCMFOR) and national exercises designed to test readiness, test interoperability and serve as the embodiment of the alliance.

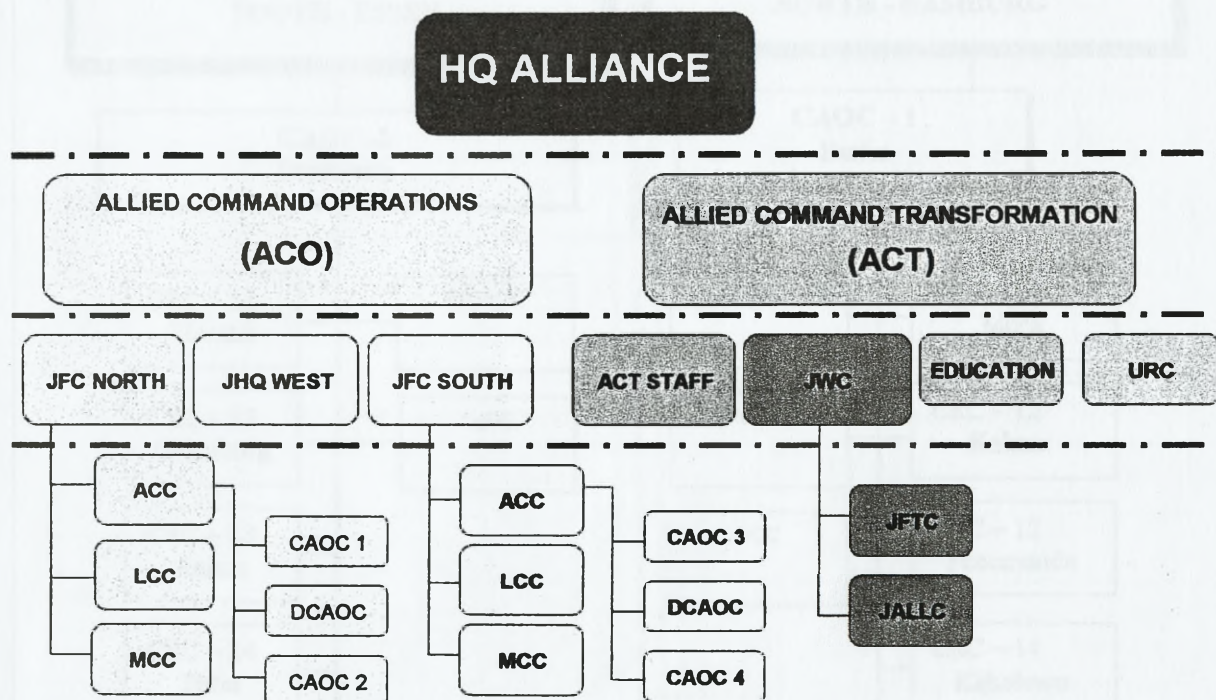
STANAFOR consists of 7 ships (data for the displacement, dimensions, range, speed, complement and weapon systems as for the ships assigned currently to the Standing Naval Force Atlantic (STANAVFORLANT)).

MCMFOR consists of 7 ships (data for the displacement, dimensions, range, speed, complement and weapon systems as for the ships assigned currently to the Mine Countermeasures Force North (MCMFORNORTH)).

*Appendix 6. Annex 2. Part 2.3.*

**Command structure and ALLIANCE naval forces**

To support the regional operational level, on the component/tactical level, there is maritime component command MCC, acting simultaneously as a Naval HQ of the ALLIANCE. It provides service-specific maritime expertise to the operational level for maritime operations.



It is located in Rostock and provides the necessary maritime expertise and support to joint operations. It disposes of two naval forces – STANAFOR and MCMFOR.

The Standing Naval Force (STANAFOR) and Mine Countermeasures Force (MCMFOR) are the unique naval entities. Each year they participate in a series of scheduled ALLIANCE and national exercises designed to test readiness, foster interoperability and serve as the embodiment of the jointness.

STANAFOR consists of 7 ships (data for the displacement, dimensions, range, speed, complement and weapon systems as for the ships assigned currently to the Standing Naval Force Atlantic (STANAVFORLANT).

MCMFOR consists of 7 ships (data for the displacement, dimensions, range, speed, complement and weapon systems as for the ships assigned currently to the Mine Countermeasures Force Northern Europe (MCMFORNORTH)

*Annex 3. Part 2.3.*

**ARMED FORCES OF THE ALLIANCE  
COUNTRIES**

- Appendix:
1. The Armed Forces - BALTA
  2. The Armed Forces - LENDIA
  3. The Armed Forces - PANON
  4. The Armed Forces - BURGIA
  5. The Armed Forces - HOWLAND

**ATTENTION :**

The Armed Forces of IBERIA and BRYTA are not reflected as a whole - only units of importance for ALLIANCE.

*Appendix 1. Annex 3. Part 2.3.*

**LAND FORCES of BALTA**

**1.1 Personnel**

Active: 137.000  
Reservists: 111.900

**1.2 ORBAT**

HQ (Operational level), 3 Military Districts

**1.2.1 Deployable Forces (DF):**

Mechanised Brigade  
Airmobile Brigade  
Light Airborne Brigade  
Marine Regiment  
Engineers Regiment

**1.2.2 Mountain Infantry Forces:**

3 Mountain Infantry Brigades  
Engineers Regiment  
Army Air regiment  
Light Airborne Regiment (Mountain)

**1.2.3 In-Place Forces (IF):**

**Division of:**

Armoured Brigade  
Mechanised Brigade  
Armoured Cavalry Brigade

**Division of:**

3 Mechanised Brigades  
Armoured Brigade  
Engineers Battalion

**1.2.4 Support Forces:**

**Air Defence Division**

2<sup>nd</sup> Air Defence Regiment (HAWK)  
1<sup>st</sup> Air Defence Regiment (SHORAD)

**Engineers Brigade**

3<sup>rd</sup> Engineers Regiment

**Artillery Brigade**

1<sup>st</sup> Field Artillery Regiment  
2<sup>nd</sup> Artillery Regiment  
1<sup>st</sup> ABC Regiment

**Army Air Division**

3<sup>rd</sup> Army Air Regiment  
1<sup>st</sup> Army Air Battalion

### 1.3. Equipment list

Tanks: 1.349

819 Leopard 1, 368 Centauro B-1, 162 Leopard 2.

Armoured Fighting Vehicles: 26 BMP-1, 50 SISU XA-186

Armoured Personnel Carrier:

827 M-113, 565 VCC-1, 1.228 VCC-2, 157 CV 9030.

Artillery: 1.390, consists of 325 howitzers (157 x 105 mm, 164 x 155mm i 4 x M-114 (reserve)

and 269 Self-propelled howitzers (260 x M-109G, 9 M-110)

MRL 227 mm: 22 MLRS

Mortars: 774 x Brandt 120 mm, 1.200 x 81 mm.

Antitank Weapon:

AT missiles: 426 x TOW, 432 x I-TOW, 752 x Milan.

1.860 AT recoilless guns (M72)

Air Defence weapon:

60 x Hawk, 112 x Stinger, 32 x Aspide.

Liaison Aircrafts:

6 x SM-1019, 3 x Do-228, 3 x P-180.

Helicopters:

Combat: 45 x A-129

Combat Support: 27 x A-109, 62 x AB-206,

Transport/Liaison: 86 x AB-205A, 68 x AB-206, 14 x AB-212, 23 x AB-412, 36 x CH-47C

UAV: 5 x Miragge 20.

**BALTA – Air Force****1. Tactical Aviation (TA).****LOTNICTWO TAKTYCZNE****TACTICAL AVIATION**

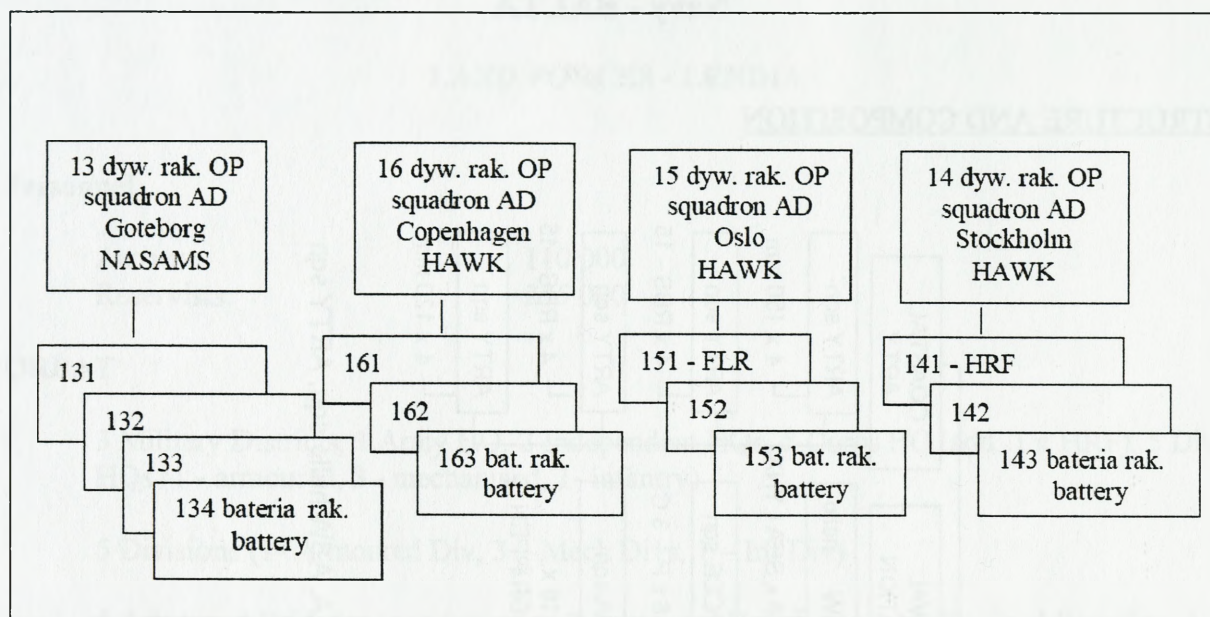
Lp	Bazowanie	Jednostka	Typ st. pow	Ilość	Przeznaczenie	Uwagi
No	Airbase	Unit	Aircraft Type	A/C NR	Use	Remarks
1	SUNDSVALL/ HARNOSAND	1 elt / sqn	F-16C	16	FBA	HRF
2	FARILA	2 elt/ sqn	F-16C	16	FBA	Air Policing
3	OSLO / FORNEBU	3 elt/ sqn	Su-22M4	16	FBA	
4	SODERHAMN	4 elt/ sqn	Su-22M4	12 12	FBA	
5	GOTEBORG / LANDVETTER	5 elt/ sqn	F-15C	16	AWX	Air Policing
6	GOTEBORG / LANDVETTER	6 elt / sqn	TORNADO ECR	16	ECR	FLR
7	MOHOLM	7 elt/ sqn	F-16C	16	AWX	
8	BERGEN	8 elt / sqn	F-16C	16	AWX	
9	BERGEN	9 elt / sqn	F-16C	16	FBA	
10	OSLO	10 elt / sqn	TORNADO IDSR	12	TRX	
11	LJUNGBYHED	11 eltrans/sqn	C-130	12	TCC	HRF
12	ARLANDA	121 elspec/sqn	KC-135 EC-130 E-3C	6 4 6	AAR ECR EAW	Strategic Command

AWX – All Weather Fighter  
 FBA- Fighter Bomber Attack  
 FBX – Fighter Bomber All Weather  
 TRX – Tactical Reconnaissance All Weather  
 TCC – Transport Cargo  
 ECR - Electronic Combat and Recce  
 AAR – Air to Air Refuelling  
 HRF – High Readiness Forces – Siły Wysokiej Gotowości  
 FLR – Forces Lower Readiness – Siły Niższej Gotowości

**Attention / Uwaga:**

Air bases net / Bazy lotnicze – See ANNEX / patrz ANNEX

2. GBAD.



HRF – High Readiness Forces

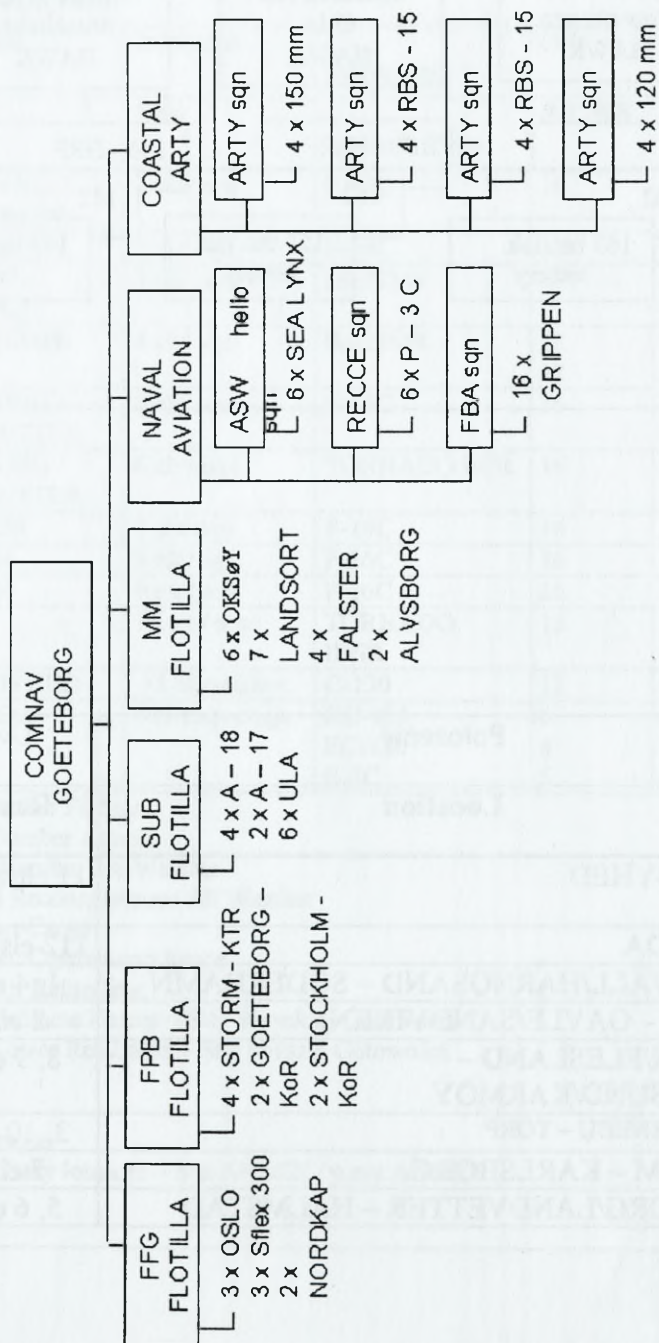
FLR – Forces Lower Readiness

3. Air bases net.

Lp.	Baza	Położenie	Uwagi
No	Unit	Location	Remarks
1.	1 Air Base	LJUNGBYHED	11 eltrans /sqn
2.	2 Air Base	ARLANDA	112 elspec/sqn
3.	3 Air Base	SUNDSVALL/HARNOSAND – SODERHAMN	1, 4 elt/sqn
4.	4 Air Base	FARILA – GAVLE/SANDVIKEN	2 elt/sqn
5.	5 Air Base	BERGEN/FLESLAND – HAUGESUND/KARMOY	8, 9 elt/sqn
6.	6 Air Base	OSLO/FORNEBU – TORP	3, 10 elt/sqn
7.	7 Air Base	MOHOLM – KARLSBORG	7 elt/sqn
8.	8 Air Base	GOTEBORG/LANDVETTER – HALMSTAD	5, 6 elt/sqn

**Navy - BALTA**

**STRUCTURE AND COMPOSITION**



**LOCATION:**

- a). Naval Base Karlskrona: FFG sqn, FPB FLOTILLA, MCM FLOTILLA, ASW hello sqn, ARTY sqn
- b). Naval Base Goeteborg: FFG sqn, SUB FLOTILLA, ARTY sqn
- c). Naval Base Bergen: FFG sqn, RECCO air sqn, ARTY sqn
- d). Naval Base Stockholm: MINELAYER sqn, FBA sqn, ARTY sqn

**PERSONNEL:** 15.000

*Appendix 2. Annex 3. Part 2.3.*

**LAND FORCES - LENDIA**

**Personnel**

Active:	110.000
Reservists:	235.000

**ORBAT**

3 Military Districts, 1 Army HQ, 2 Independent HQs, 5 Corps HQ (add. 1 x HRF), 5 Div HQs (1 - armoured, 3 - mechanised, 1- infantry).

5 Divisions (1- Armoured Div, 3 – Mech Divs, 1 – Inf Div)

5 Armoured Brigades (consists up to 2 Armoured Battalions, 1 Mechanised Battalion, 1 Artillery Battalion)

7 Mechanised Brigades (consists of 2 Mechanised Battalions, 1 Armoured Battalion, 1 Artillery Battalion)

5 Infantry Brigades

Coastal Defence HQ:

2 Coastal Defence Artillery Regiment

Army Air Brigade consists of 5 Army Air Battalions

Army Air Squadron

**Special Forces (HRF):**

Special Operation HQ

Marine Brigade (3 battalions)

4 Reconnaissance Battalions

5 Artillery Battalions

10 Air Defence Battalions (to support Arty)

2 Tactical Missile Battalions I-Hawk.

## Equipment

Tanks: 1.733

712 Leopard 1, 669 M-60, 352 Leopard 2

Reconnaissance Vehicles: 130 M-8, 8 HMMWV

AFV: 500 BMP-1

APC: 1.669 M-113.

Artillery: 1.900 (without Coastal Arty)

consists of 729 howitzers (463 x 105 mm, 141 x 155mm i 266 x 155 mm) and 413 self-propelled howitzers (73 x M-52A1, 141 x M-109G, 12 M-107, ,181 x M-110A2)

MRL 122 mm: 116 RM-70, 227 mm:

18 MLRS (add. ATACMS)

Coastal Defence Artillery: 53

Mortars: 624 x 107 mm M-30, 2.800 x 81 mm.

Antitank weapon:

AT missiles: 336 x TOW, 262 x AT-4 Spigot, 290 x Milan (add. 42 HMMWV).

Air Defence weapon:

42 x I-Hawk, 1.000 x Stinger, 21 FU SA-15, 20 SA-8B, SA-10 (S-300)

Self-propelled AD gun ZSU 23/4 x 506

Liaison Aircrafts:

43 x U-17A.

Helicopters:

Combat: 20 x AH-64A

Transport/ Liaison: 76 x UH-1H, 31 x AB-205, 14 x AB-206, 9 x CH-47D

UAV:5 x Miragge 20

**LENDIA – Air Force**

**1. Tactical Aviation (TA).**

<b>LOTNICTWO TAKTYCZNE</b>						
<b>TACTICAL AVIATION</b>						
Lp	Bazowanie	Jednostka	Typ	Ilość	Przeznaczenie	Uwagi
No	Air base	Unit	Aircraft Type	A/C NR	Use	Remarks
1	PŁOTY	1 elt / sqn	MiG-29	16	AWX	HRF
2	GOLENIOW	2 elt / sqn	MiG-29	16	AWX	Air Policing
3	ZEGRZE POMORSKIE	3 elt / sqn	Su-22M4	16	FBA	
4	SMARDZKO	4 elt / sqn	Su-22M4	16	FBA	
5	MALBORK	5 elt / sqn	F-16C	16	AWX	Air Policing
6	PIŁA	6 elt / sqn	F-16C	16	AWX	
7	M. MAZOWIECKI	7 elt / sqn	A-10	16	FBA	
8	IRENA	8 elt / sqn	F-15E	16	AWX	FLR
9	POWIDZ	9 elt / sqn	Su-22M4R	16	TRX	
10	OKĘCIE	10 elt / sqn	F-15C	16	AWX	
11	SZYMANY	11 elt / sqn	F-15C	16	AWX	
12	BABIMOST	12elt / sqn	F-15C	16	AWX	Air Policing
13	KRZESINY	13 elt / sqn	F-15C	16	AWX	
14	MODLIN	14 elt / sqn	F-16C	16	AWX	Air Policing
15	MODLIN	15 elt / sqn	F-15E	16	FBX	
16	POWIDZ	16 elt / sqn	F-15E	16	FBX	
17	MODLIN	17 elt / sqn	Su-22M4R	16	TRX	FLR
18	OLEŚNICA	18 elspec/ sqn	EC-130 EA-6B	4 12	ECR ECR	HRF
19	ZABREH	19 eltrans / sqn	C-130J	12	TCC	HRF
11	ZABREH	120 eltrans / sqn	C-5A	12	TCC	HRF

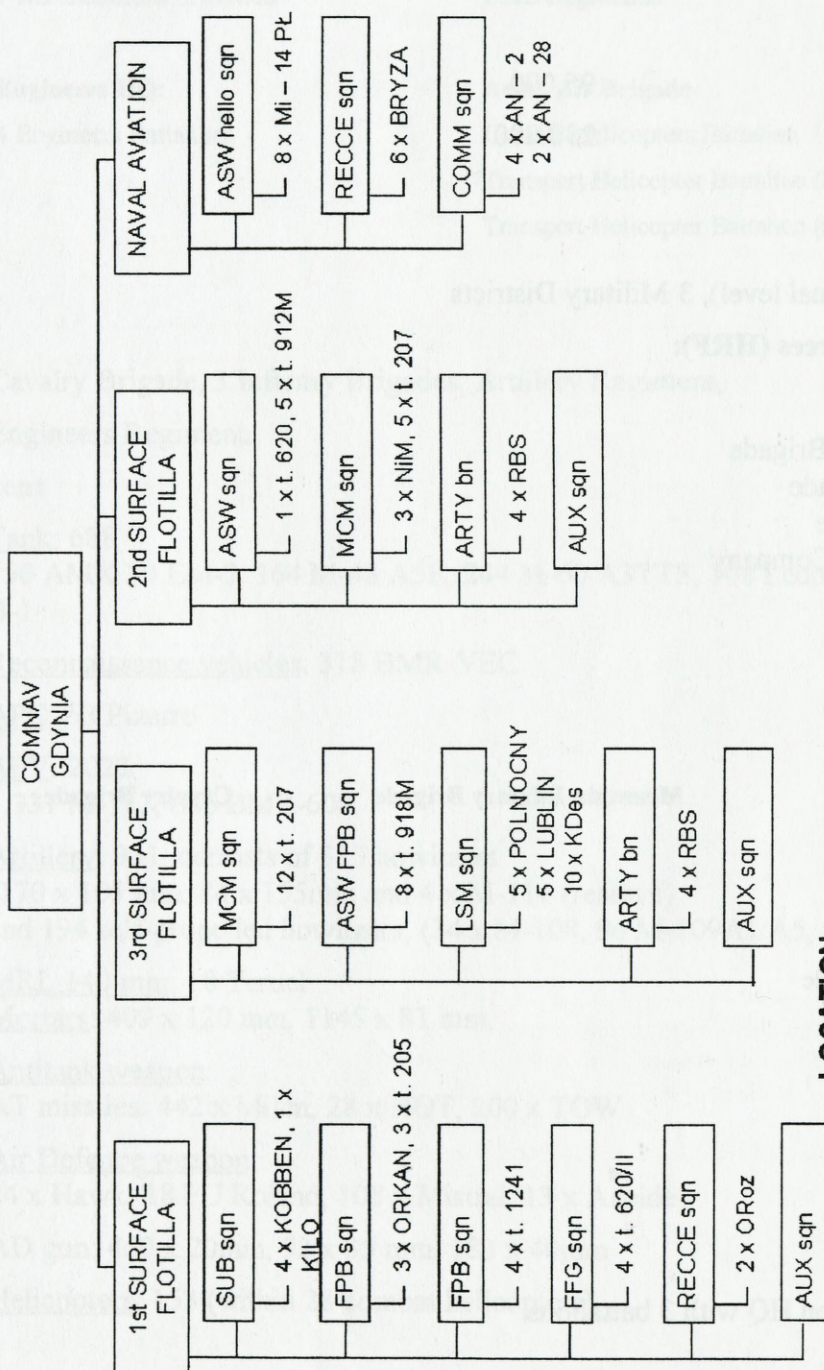
AWX – All Weather Fighter  
FBA- Fighter Bomber Attack  
FBX – Fighter Bomber All Weather  
TRX – Tactical Reconnaissance All Weather  
TCC – Transport Cargo  
ECR - Electronic Combat and Recce  
AAR – Air to Air Refuelling  
HRF – High Readiness Forces – Siły Wysokiej Gotowości  
FLR – Forces Lower Readiness – Siły Niższej Gotowości

**Attention / Uwaga:**  
Air bases net / Bazy lotnicze – See ANNEX / patrz ANNEX



**LENDIA - NAVY**

**STRUCTURE AND COMPOSITION**



**LOCATION**

- a). Naval Base Gdynia: SUB sqn, FFG sqn, FPB sqn - 2, RECCO ship sqn, AUX sqn
- b). Naval Base Świnoujście: MCM sqn, ASW FPB sqn, LSM sqn, ARTY bn, AUX sqn
- c). Naval Base Hel: ASW sqn, MCM sqn, ARTY bn, AUX sqn
- d). AS Gdynia: ASW hello sqn, RECCO air sqn, COMM air sqn

**PERSONNEL: 30.000**

*Appendix 3. Annex 3. Part 2.3.*

**LAND FORCES - PANON**

**Personnel**

Active: 95.000  
Reservists: 230.000

**ORBAT**

1 HQ (Operational level), 3 Military Districts

**Deployable Forces (HRF):**

**Division:**

Light Airborne Brigade  
Airmobile Brigade  
Infantry Brigade  
Special Forces Company

**In-Place Forces**

**Infantry Division**

2 Infantry Brigades  
Armoured Brigade  
Light Cavalry Brigade  
Artillery Regiment  
AD Regiment  
Engineers Regiment

**Mountain Infantry Brigade**

**Cavalry Brigade**

**Special Forces:**

Special Operation HQ with 3 battalions.

**Support Forces:**

**AD HQ:**

2 AD Regiments HAWK  
7 AD Battalions SHORAD

**Field Artillery HQ**

4 Artillery Regiments (self-propelled)  
2 AD Regiments

**Engineers HQ:**

4 Engineers Battalions

**Army Air Brigade**

Combat Helicopters Battalion  
Transport Helicopter Battalion (MEDEVAC)  
Transport Helicopter Battalion (tactical)

**Reserve**

Cavalry Brigade, 3 Infantry Brigades, Artillery Regiment,  
Engineers Regiment.

**Equipment**

Tank: 688

150 AMX 30 EM-2, 164 M-48 A5E, 244 M-60 A3TTS, 108 Leopard 2A4, 22 Centauro B-1

Reconnaissance vehicles: 318 BMR-VEC

APC: 58 Pizarro

AFV: 2023

1.337 M-113, 686 BMR-600.

Artillery: 931, consists of 310 howitzers

(170 x 105 mm, 84 x 155mm and 4 x M-114 (reserve)  
and 194 self-propelled howitzers, (34 x M-108, 96 M-109A1/A5, 64 x M-110)

MRL 140 mm: 18 Teruel

Mortars: 409 x 120 mm, 1145 x 81 mm.

Antitank weapon:

AT missiles: 442 x Milan, 28 x HOT, 200 x TOW

Air Defence weapon:

24 x Hawk, 18 FU Roland, 108 x Mistral, 13 x Aspide.

AD gun: 460 x 20mm, 92 x 35 mm, 183 x 40mm

Helicopters: 153 (within 28 combat helicopters).

## Air Force - PANON

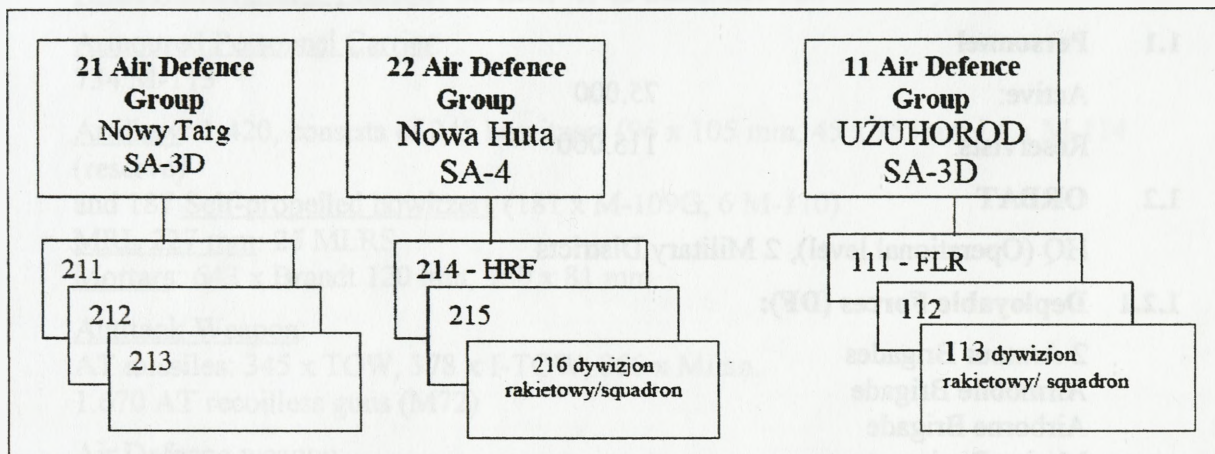
## 1. Tactical Aviation (TA).

<i>LOTNICTWO TAKTYCZNE</i>						
<i>TACTICAL AVIATION</i>						
Lp.	Bazowanie	Jednostka	Typ st. pow	Ilość	Przeznaczenie	Uwagi
No	Airbase	Unit	Aircraft Type	A/C NR	Use	Remarks
1	PIESTANY	1 elt / sqn	F-15C	16	AWX	HRF
2	NOWY TARG	2 elt / sqn	MiG-29	16	AWX	Air Policing
3	MUKACHEVO	3 elt / sqn	MiG-29	16	AWX	
4	LUNA	4 elt / sqn	MiG-29	16	AWX	Air Policing
5	GORODOK	5 elt / sqn	F-16C	16	FBA	
6	MEZOKOVESD	6 elt / sqn	F-16C	16	FBA	FLR
7	RAKOCZIFALVA	7 elt / sqn	F-16C	16	FBA	Air Policing
8	OROSHAZA	8 elt / sqn	Su-22M4	16	FBA	FLR
9	LUNA	9 elt / sqn	F-16A (R)	16	TRX	
10	STRYY	10 elt / sqn	F-16CJ	16	ECR	
11	KOSICE	125 eltrans / sqn	C-130J	12	TCC	
12	KOSICE	12 elspec / sqn	KC-135	12	AAR	FLR
13	DEBRECEN	126 elspec / sqn	EA-6B E-3C	8 4	ECR AEW	Strategic Command

AWX – All Weather Fighter  
 FBA- Fighter Bomber Attack  
 FBX – Fighter Bomber All Weather  
 TRX – Tactical Reconnaissance All Weather  
 TCC – Transport Cargo  
 ECR - Electronics Combat and Recce  
 AAR – Air to Air Refuelling  
 AEW – Airborne Early Warning  
 HRF – High Readiness Forces – Siły Wysokiej Gotowości  
 FLR – Forces Lower Readiness – Siły Niższej Gotowości

**Attention / Uwaga:**  
 Air bases net / Bazy lotnicze – See ANNEX / patrz ANNEX

**GBAD.**



HRF – High Readiness Forces  
FLR – Forces Lower Readiness

**2. Air bases net.**

Lp. No	Baza Unit	Położenie Location	Uwagi Remarks
1.	1 Air Base	KOSICE	11 eltrans, 12 elspec/sqn
2.	2 Air Base	DEBRECEN	13 elspec/sqn
3.	3 Air Base	PIESTANY	1 elt/sqn
4.	4 Air Base	NOWY TARG	2 elt/sqn
5.	5 Air Base	MUKACHEVO	3 elt/sqn
6.	6 Air Base	LUNA	4, 9 elt/sqn
7.	7 Air Base	GORODOK	5 elt/sqn
8.	8 Air Base	MEZOKOVESD	6 elt/sqn
9.	9 Air Base	RAKOCZIFALVA	7 elt/sqn
10.	10 Air Base	OROSHAZA	8 elt/sqn
11.	11 Air Base	STRYY	10 elt/sqn

*Appendix 4. Annex 3. Part 2.3.*

**LAND FORCES of BURGIA**

**1.1 Personnel**

Active: 75.000

Reservists: 115.000

**1.2 ORBAT**

HQ (Operational level), 2 Military Districts

**1.2.1 Deployable Forces (DF):**

2 Armour Brigades  
Airmobile Brigade  
Airborne Brigade  
Marine Regiment  
Engineers Regiment  
Army Air Regiment  
Special Forces Battalion

**1.2.2 Mountain Infantry Forces:**

Mountain Infantry Brigade  
Engineers Regiment  
Arty Regiment (Mountain)

**1.2.3 In-Place Forces (IF):**

**Division of:**

Armoured Brigade  
Mechanised Brigade  
Armoured Cavalry Brigade

**Division of:**

2 Armoured Brigades  
Mechanised Brigade  
Engineers Battalion

**1.2.4. Support Forces:**

**Air Defence Division**

2<sup>nd</sup> Air Defence Regiment (HAWK)  
1<sup>st</sup> Air Defence Regiment (SHORAD)

**Engineers Brigade**

3<sup>rd</sup> Engineers Regiment

**Artillery Brigade**

1<sup>st</sup> Field Artillery Regiment  
2<sup>nd</sup> Artillery Regiment  
1<sup>st</sup> ABC Regiment  
**Army Air Division**  
2<sup>nd</sup> Army Air Regiment  
1<sup>st</sup> Army Air Battalion

### 1.3. Equipment list

Tanks: 1.242

628 Leopard 1, 614 Leopard 2.

Armoured Fighting Vehicles: 86 BMP-1, 45 SISU XA-186

Armoured Personnel Carrier:

734 M-113

Artillery: 1.420, consists of 245 howitzers (96 x 105 mm, 45 x 155mm i 4 x M-114 (reserve)

and 187 Self-propelled howitzers (181 x M-109G, 6 M-110)

MRL 227 mm: 25 MLRS

Mortars: 643 x Brandt 120 mm, 950 x 81 mm.

Antitank Weapon:

AT missiles: 345 x TOW, 378 x I-TOW, 866 x Milan.

1.670 AT recoilless guns (M72)

Air Defence weapon:

65 x Hawk, 95 x Stinger, 25 x Aspide.

Liaison Aircrafts:

4 x SM-1019, 4 x Do-228, 4 x P-180.

Helicopters:

Combat: 55 x A-129

Combat Support: 27 x A-109, 62 x AB-206,

Transport/Liaison: 35 x UH-1H, 56 x AB-206, 25 x AB-205A, , 20 x AB-412, 48 x CH-47C

UAV: 9 x Miragge 20.

**BURGIA – Air Force**

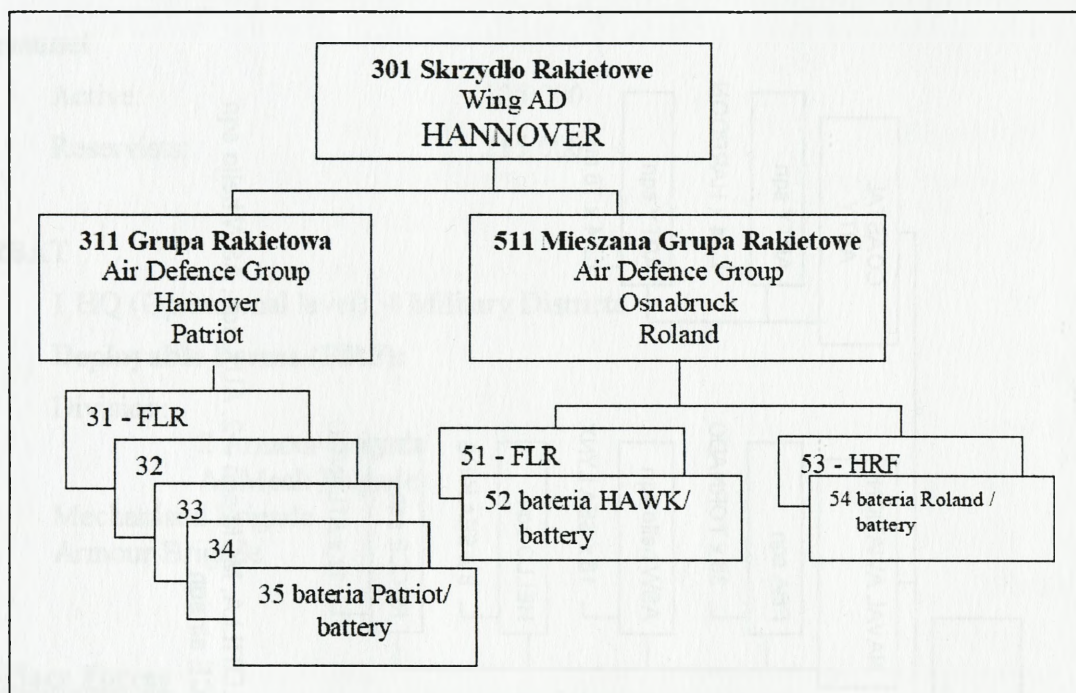
**1. Tactical Aviation (TA).**

<b>LOTNICTWO TAKTYCZNE</b>						
<b>TACTICAL AVIATION</b>						
Lp.	Bazowanie	Jednostka	Typ st. pow	Ilość	Przeznaczenie	Uwagi
No	Airbase	Unit	Aircraft Type	A/C NR	Use	Remarks
1	STENDAL	1 elt / sqn	F-4F	20	AWX	HRF/Air Policing
2	GATOW	2 elt / sqn	F-16C	16	FBA	
3	ALHORN	3 elt / sqn	TORNADO IDS	16	FBX	
4	ALLSTEDT	4 elt / sqn	TORNADO ECR TORNADO IDSR	10 10	ECR TRX	
5	DAMGARTEN	5 el t / sqn	F-15C	16	AWX	
6	KARUP	6 elt / sqn	TORNADO IDS	16	FBX	
7	KARUP	7 elt / sqn	Su-22M4	20	FBA	
8	ALBORK	8 elt / sqn	F-16C	16	FBX	Air Policing
9	JEVER	9 eltrans / sqn	C-130J	12	TCC	FLR
10	JEVER	122 elspec / sqn	KC-135 EC-130 E-3C	8 4 4	AAR ECR AEW	Strategic Command

AWX – All Weather Fighter  
FBA- Fighter Bomber Attack  
FBX – Fighter Bomber All Weather  
TRX – Tactical Reconnaissance All Weather  
TCC – Transport Cargo  
ECR - Electronic Combat and Recce  
AAR – Air to Air Refuelling  
AEW – Airborne Early Warning  
HRF – High Readiness Forces – Siły Wysokiej Gotowości  
FLR – Forces Lower Readiness – Siły Niższej Gotowości

**Attention / Uwaga:**  
Air bases net / Bazy lotnicze – See ANNEX / patrz ANNEX

2. GBAD.

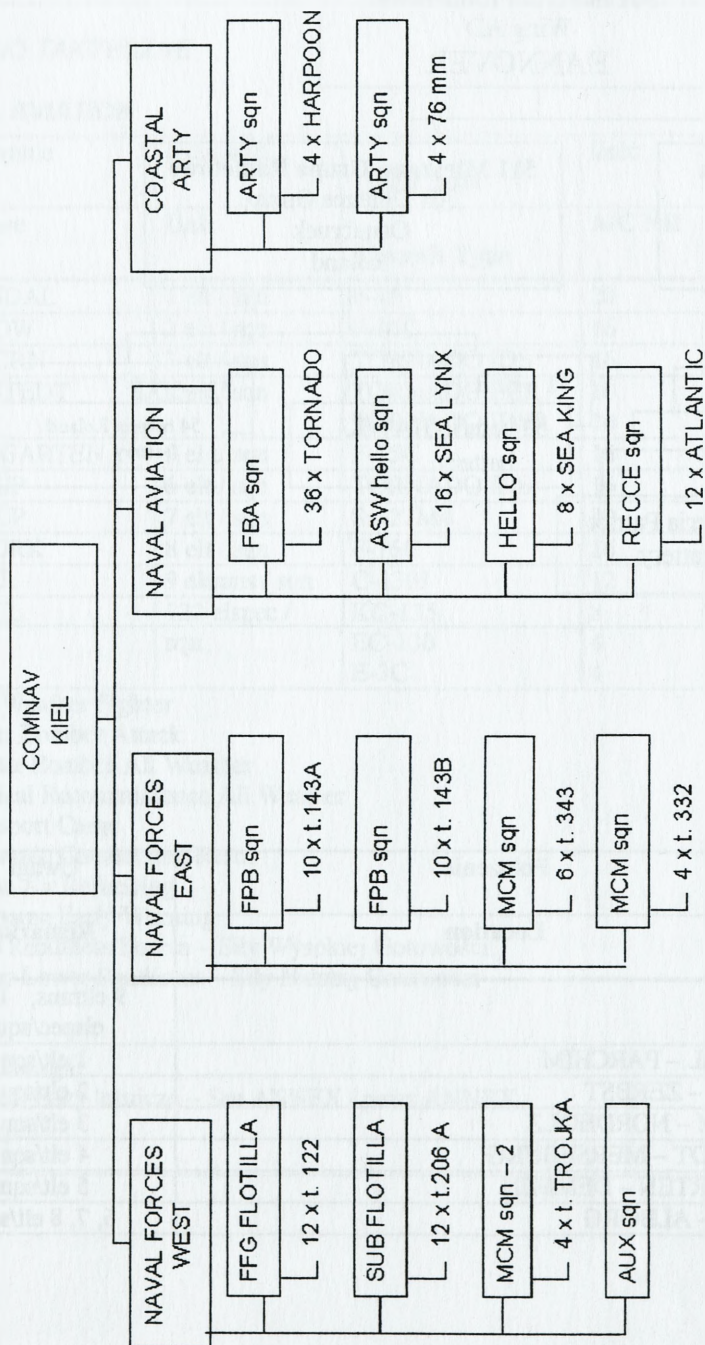


3. Air bases net.

Lp.	Baza	Polozenie	Uwagi
No	Unit	Location	Remarks
1.	1 Air Base	JEVER	9 eltrans, 110 elspec/sqn
2.	2 Air Base	STENDAL - PARCHIM	1 elt/sqn
3.	3 Air Base	GATOW - ZERBST	2 elt/sqn
4.	4 Air Base	ALHORN - NORDHOLZ	3 elt/sqn
5.	5 Air Base	ALLSTEDT - MERSEBURG	4 elt/sqn
6.	6 Air Base	DAMGARTEN - DEMMIN	5 elt/sqn
7.	7 Air Base	KARUP - ALBORG	6, 7, 8 elt/sqn

**NAVY - BURGIA**

**STRUCTURE AND COMPOSITION**



- LOCATION:**
- a). Naval Base Wilhelmshaven: FFG FLOTILLA, SUB FLOTILLA, MCM sqn - 2, AUX sqn, ASW hello sqn
  - b). Naval Base Kiel: FPB sqn, MCM sqn, FBA sqn, RECCE air sqn
  - c). Naval Base Rostock: FPB sqn, MCM sqn, ARTY sqn
  - d). Naval Base Frederikshavn: HELLO sqn
  - e). Island Zelandia: ARTY sqn
- PERSONNEL: 26.000**

*Appendix 5. Annex 3. Part 2.3.*

**LAND FORCES of HOWLAND**

**Personnel**

Active: 125.000  
Reservists: 215.000

**ORBAT**

1 HQ (Operational level), 4 Military Districts

**Deployable Forces (HRF):**

Division:  
    2 Armour Brigade  
    AirMech Brigade  
Mechanised Brigade  
Armour Brigade

**In-Place Forces**

<b>2 Mechanised Divisions, each:</b>	<b>Mountain Infantry Brigade</b>	<b>Armour Cavalry Division</b>
2 Mechanised Brigades		3 Armour Brigades
Armoured Brigade		Mechanised Brigade
Light Cavalry Brigade		Artillery Regiment
Artillery Regiment		AD Regiment
AD Regiment		Engineers Regiment
Engineers Regiment		

**Special Forces:**

Special Operation HQ with 3 battalions.

**Support Forces:**

**AD HQ:**

3 AD Regiments HAWK  
8 AD Battalions SHORAD

**Field Artillery HQ**

4 Artillery Regiments (self-propelled)  
2 AD Regiments

**Engineers HQ:**

Engineers Regiment

**Army Air Brigade**

Combat Helicopters Battalion  
Transport Helicopter Battalion (MEDEVAC)  
Transport Helicopter Battalion (tactical)

**Reserve**

Armour Cavalry Brigade, 3 Infantry Brigades, Artillery Regiment,  
Engineers Regiment.

**Equipment**

Tank: 1150

250 AMX 30 EM-2, 355 M-48 A5E, 225 M-60 A3TTS, 320 Leopard 2A4

Reconnaissance vehicles: 344 BMR-VEC

APC: 78 Pizarro

AFV: 2200

1.450 M-113, 650 BMR-600.

Artillery: 1255, consists of 450 howitzers

(280 x 105 mm, 166 x 155mm and 4 x M-114 (reserve)

and 230 self-propelled howitzers, (48 x M-108, 96 M-109A1/A5, 86 x M-110)

MRL 140 mm: 24 Teruel

Mortars: 398 x 120 mm, 1285 x 81 mm.

Antitank weapon:

AT missiles: 550 x Milan, 86 x HOT, 180 x TOW

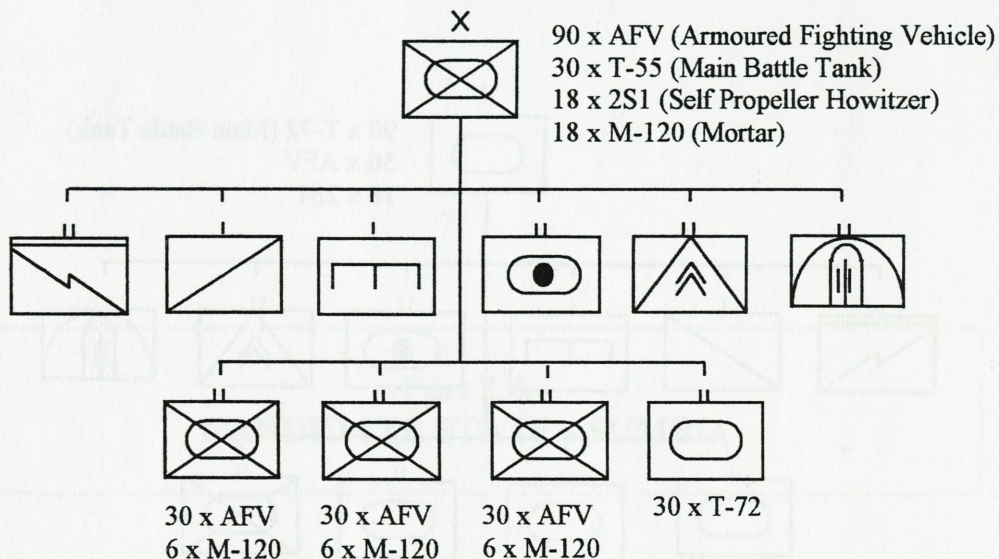
Air Defence weapon:

24 x Hawk, 18 FU Roland, 108 x Mistral, 13 x Aspide.

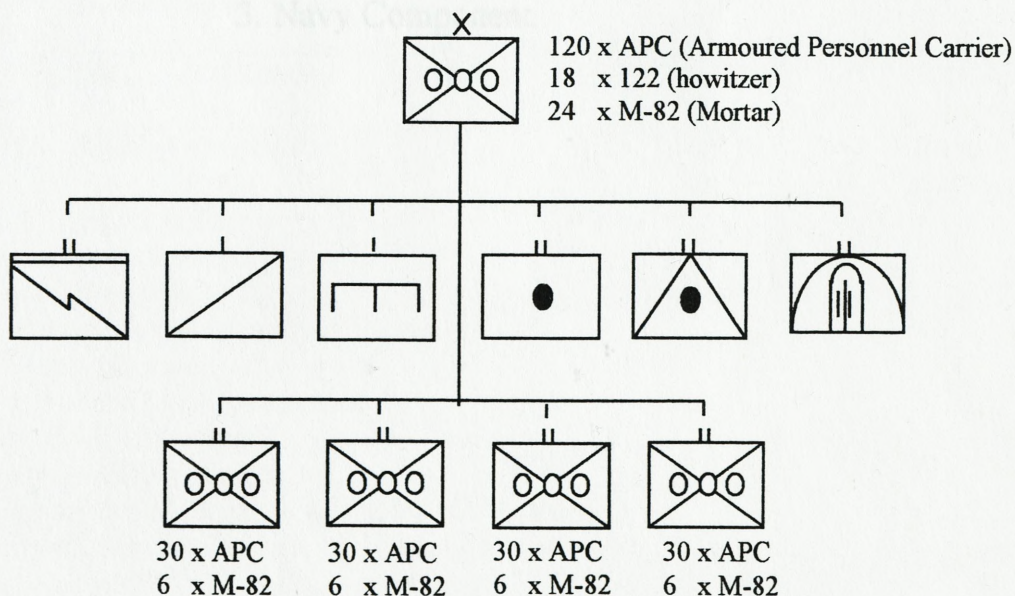
AD gun: 380 x 20mm, 172 x 35 mm, 196 x 40mm

Helicopters: 187 (within 48 combat helicopters).

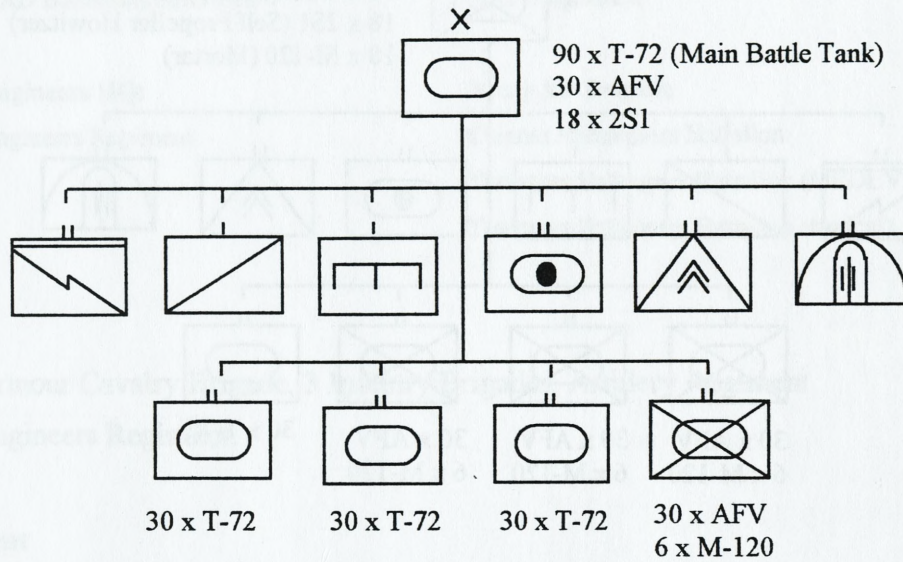
### Mech Bde Structure



### Inf Mech Bde Structure



### Armored Bde Structure



1. Tactical Aviation (TA)

Sl. No.	Base/Unit	Unit	Aircraft	A/C No.	Use	Remarks
1	WILLOW	1st / sqn	OH	16	AWX	HRF
2	...	...	...	...	...	...
3	...	...	...	...	...	...
4	...	...	...	...	...	...
5	...	...	...	...	...	...
6	...	...	...	...	...	...
7	...	...	...	...	...	...
8	...	...	...	...	...	...
9	...	...	...	...	...	...
10	...	...	...	...	...	...
11	...	...	...	...	...	...
12	...	...	...	...	...	...
13	...	...	...	...	...	...
14	...	...	...	...	...	...

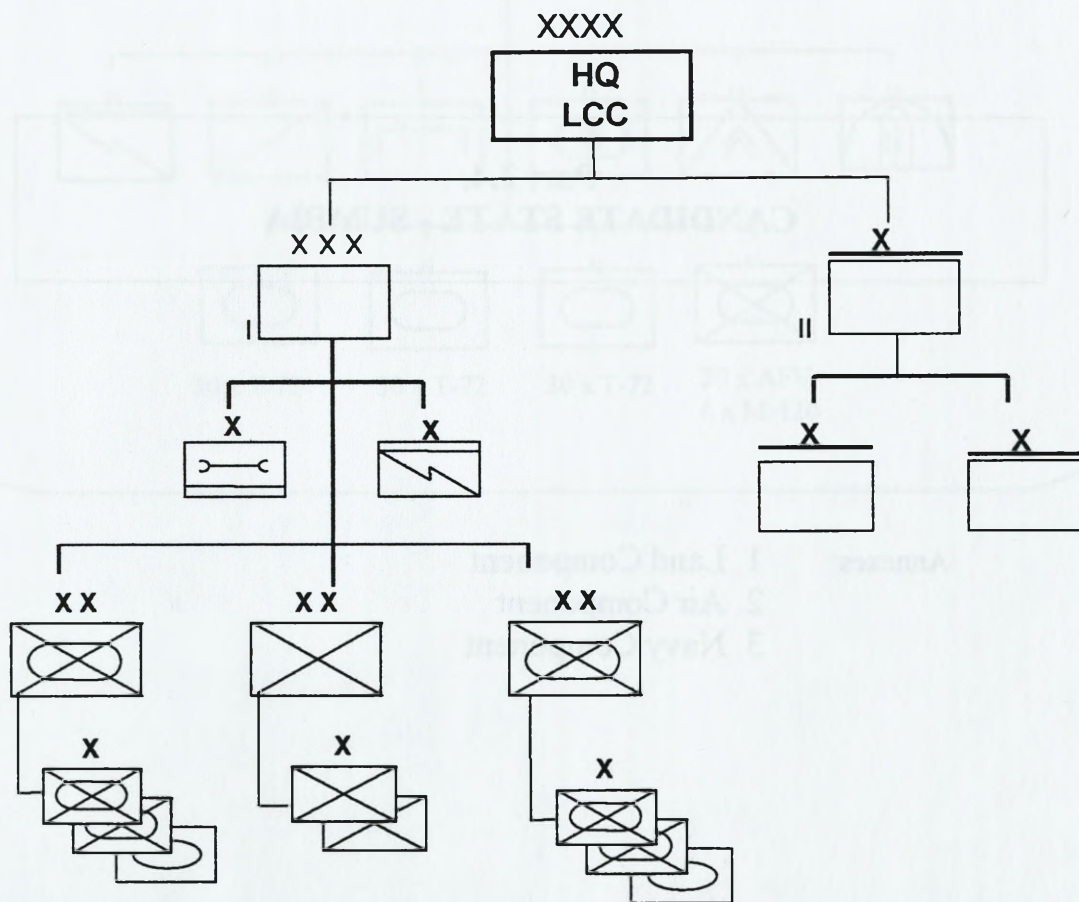
**Part 2.4.**  
**CANDIDATE STATE - SUMBIA**

- Annexes:
1. Land Component
  2. Air Component
  3. Navy Component

AWX - All Weather Fighter  
 FBA - Fighter Bomber Attack  
 FBX - Fighter Bomber All Weather  
 TRX - Tactical Reconnaissance All Weather  
 TCC - Transport Cargo  
 ECR - Electronics Combat and Recon  
 AAR - Air to Air Refueling  
 AEW - Airborne Early Warning  
 HRF - High Readiness Force - Sky Warning Godwood  
 FLR - Force Lower Readiness - Sky Warning Godwood

Annex 1. Part 2.4.

LAND COMPONENT



**HOWLAND – Air Force**

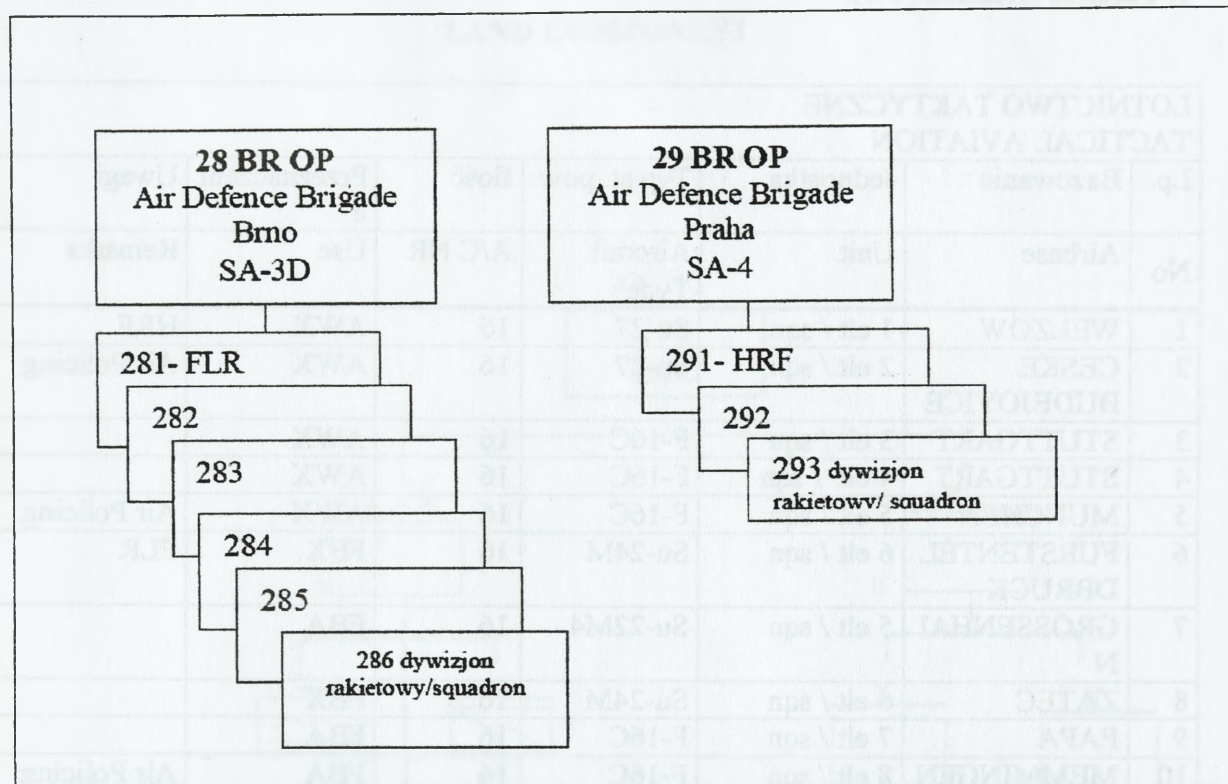
**1. Tactical Aviation (TA).**

LOTNICTWO TAKTYCZNE TACTICAL AVIATION						
Lp.	Bazowanie	Jednostka	Typ st. pow	Ilość	Przeznaczenie	Uwagi
No	Airbase	Unit	Aircraft Type	A/C NR	Use	Remarks
1	WELZOW	1 elt / sqn	Su-27	16	AWX	HRF
2	CESKE BUDEJOVICE	2 elt / sqn	Su-27	16	AWX	Air Policing
3	STUTT GART	3 elt / sqn	F-16C	16	AWX	
4	STUTT GART	4 elt / sqn	F-16C	16	AWX	
5	MUNCHEN	5 elt / sqn	F-16C	16	AWX	Air Policing
6	FURSTENTEL DBRUCK	6 elt / sqn	Su-24M	16	FBX	FLR
7	GROSSENHAI N	5 elt / sqn	Su-22M4	16	FBA	
8	ZATEC	6 elt / sqn	Su-24M	16	FBX	
9	PAPA	7 elt / sqn	F-16C	16	FBA	
10	MEMMINGEN	8 elt / sqn	F-16C	16	FBA	Air Policing
11	TABOR / VSECHOV	9 elt / sqn	Su-24 MR	16	TRX	
12	FURSTENFEL DBRUCK	10 elt / sqn	Su-24MP	16	ECR	FLR
13	FRANKFURT	123 eltrans / sqn	Ił - 76	12	TCC	Strategic Command
14	FRANKFURT	124 elspec / sqn	Ił - 78	12	AAR	Strategic Command

AWX – All Weather Fighter  
FBA- Fighter Bomber Attack  
FBX – Fighter Bomber All Weather  
TRX – Tactical Reconnaissance All Weather  
TCC – Transport Cargo  
ECR - Electronics Combat and Recce  
AAR – Air to Air Refuelling  
AEW – Airborne Early Warning  
HRF – High Readiness Forces – Siły Wysokiej Gotowości  
FLR – Forces Lower Readiness – Siły Nizszej Gotowości

Attention / Uwaga:  
Air bases net / Bazy lotnicze – See ANNEX / patrz ANNEX

2. GBAD.



HRF – High Readiness Forces  
FLR – Forces Lower Readiness

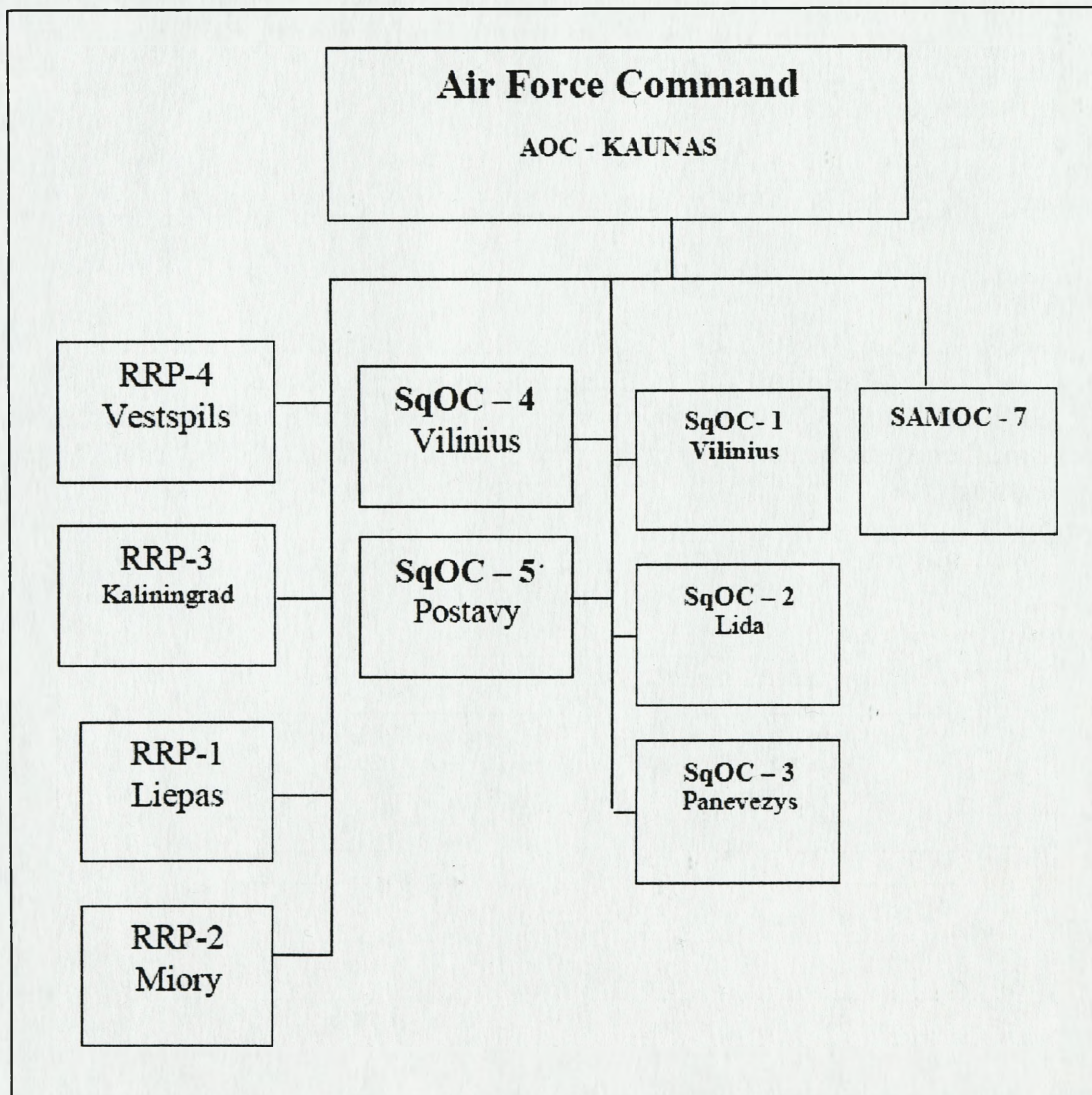
3. Air bases net.

Lp. No	Baza Unit	Położenie Location	Uwagi Remarks
1.	1 Air Base	FRANKFURT	11 eltrans, 112 elspec / sqn
2.	2 Air Base	MUNCHEN – MEMMINGEN	5, 8 elt/sqn
3.	3 Air Base	STUTTGART – LECHFELD	3, 4 elt/sqn
4.	4 Air Base	TABOR VSECHOV – ZATEC	6, 9 elt/sqn
5.	5 Air Base	WELZOW – GROSSENHAIN	1, 5 elt/sqn
6.	6 Air Base	PAPA – TASZAR	7 elt/sqn
7.	7 Air Base	CESKE BUDEJOVICE – LINZ	2 elt/sqn
8.	8 Air Base	FURSTENFELDBRUCK – INGOLSTADT	10 elt/sqn

### SUMBIA – Air Force Component

#### 1. Air Component Command Structure.

In the ACCS are used stationary CPs – AOC and SqOC. SAMOC and RRP are mobile CPs which can move to signed areas. ACC is located inside AOC which fulfills Command and Control functions – offensive as well as defensive. To each air command and control level is issued current regional political – military situation.



The SUMBIAN ASACS consists of 4 x RRP directly under Air Operations Centre which has reserve as 2 x RRP.

**2. Tactical Aviation (TA).**

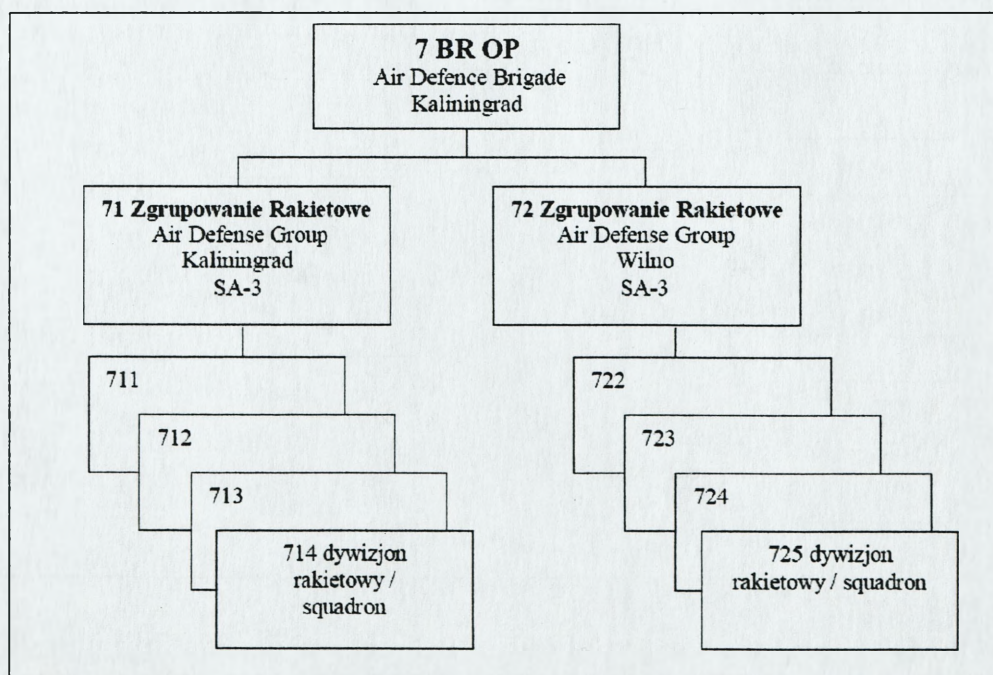
TA has been continuing the training process of peacetime. The pilots training level is high and ensures fulfilling the tasks in the scope of destroying: air ground and maritime targets.

LOTNICTWO TAKTYCZNE TACTICAL AVIATION						
Lp.	Bazowanie	Jednostka	Typ st. pow.	Ilość	Przeznaczenie	Uwagi
No	Air base	Unit	Aircraft type	A/C No	Use	Remarks
1	VILNIUS	1 elt / sqn	MiG-29	16	AWX	
2	LIDA	2 elt / sqn	Su-22M4	16	FBA	
3	PANEVEZYS	3 elt / sqn	Su-22M4R Su-22M4	8 8	TRX FBA	
4	POSTAVY	4 elt / sqn	F-16C	16	AWX	
5	VILINIUS	4 eltrans / sqn	An-26	10	TCC	

AWX – All Weather Fighter  
FBA- Fighter Bomber Attack  
TRX – Tactical Reconnaissance All Weather  
TCC – Transport Cargo  
Attention / Uwaga:  
Air bases net / Bazy lotnicze – See ANNEX / patrz ANNEX

**3. GBAD.**

The **SUMBIAN GBAD** units in peacetime there are in their bases in Kaliningrad and Wilno. The 7<sup>th</sup> SAM AD Brigade (71 and 72 air defense group) is located in Wilno. This brigade is equipped in SA-3 launchers. Every squadron during wartime gets four SAM systems. During peacetime mentioned augmentation units there are in Kaliningrad and Wilno located 71 and 72 SAM task group.



**4. Air Force logistic situation.**

Air logistic support is provided in the national Armed Forces logistic support system. Gathered national logistic support ensures the continuity of operations within 15 days regarding the considerable limits (bombs, missiles, rockets etc.)

Despite this there aren't possibilities to gain and fulfill air forces reserves, aircraft missiles and GBAD missiles (SA-3D systems).

TA is ready to act in 80% rate, and GBAD launchers 90% rate.

After MOU (Memorandum of Understanding) with Alliance the preparing works are continued to enable delivering by SUMBIA civil - military renders within the framework of host nation support (HNS). Currently the SUMBIAN government is finishing capability catalog (CAPTAG).

At air bases have been continuing preparing works them to fulfill the transit base function for allied air force:

- POSTAVY (1 Air Base) – F-16C;
- VILNIUS (2 Air Base) – MiG-29;
- LIDA (3 Air Base) – Su-22M4;
- PANEVEZYS (4 Air Base) – Su-22M4 and Su-22M4R.

Technicians of these air bases are comprised the training schedule in the scope of ACS at C – level.

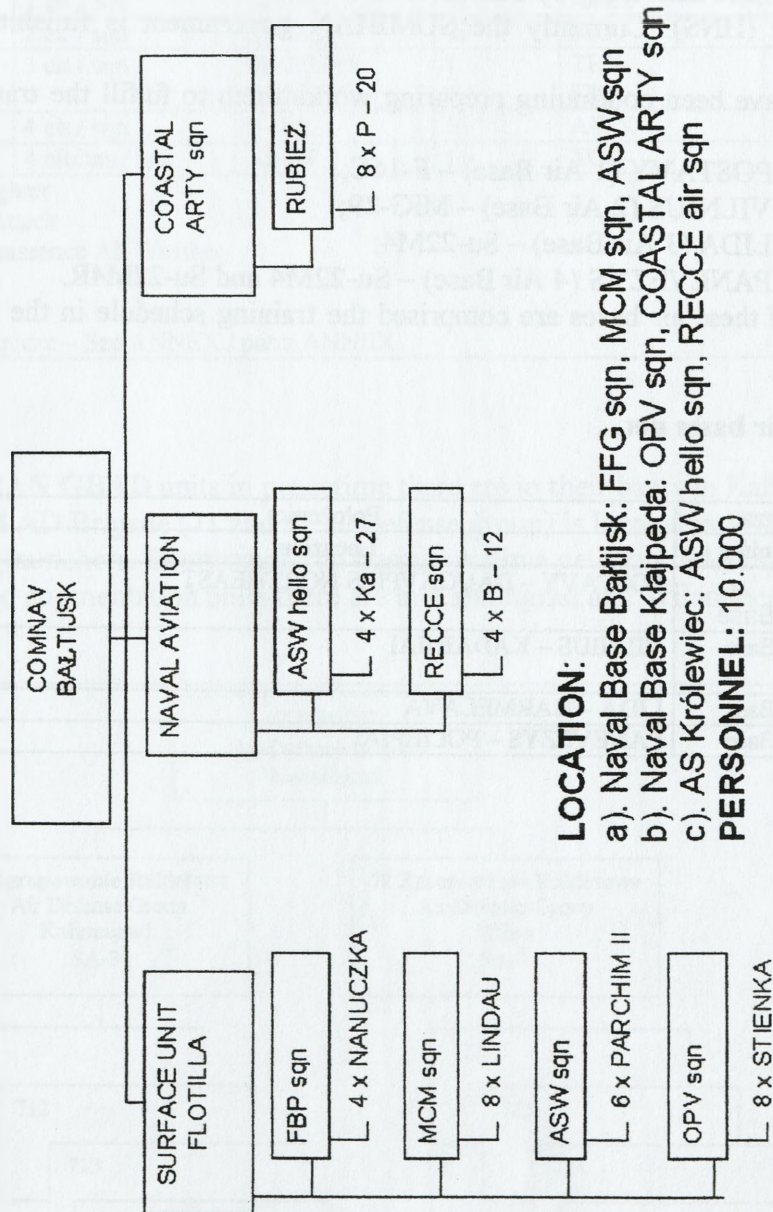
**5. SUMBIA air bases net.**

Lp. No	Baza Unit	Polozenie Location	Uwagi Remarks
1.	1 Air Base	POSTAVY – DAUGAVPILS NORTHEAST	4 elt/sqn
2.	2 Air Base	VILNIUS – KADAINIAI	1 elt/sqn 4 eltrans/sqn
3.	3 Air Base	LIDA – KARMELAVA	2 elt/sqn
4.	4 Air Base	PANEVEZYS – POLIEPIAI	3 eltsqn

Annex 4. Part 2.4.

NAVY COMPONENT SUMBIA

STRUCTURE AND COMPOSITION



**Part 2.5.**  
**NON-ALLIANCE STATES – PARTIES OF THE CRISIS**  
**SITUATION**

- Annexes :**
1. The Armed Forces - BELAND
  2. The Armed Forces - JAPALA
  3. The Armed Forces - SAMARA

	BRDM 2	T-72M	BMP 2	Artillery	AD
 Division Units	30	10	10	H 203	64-12
				72	18
 Battalion	80	63	60	H 201	280 23-4
				24	24
 Company	10	11	200	H 201	280 23-4
				24	24

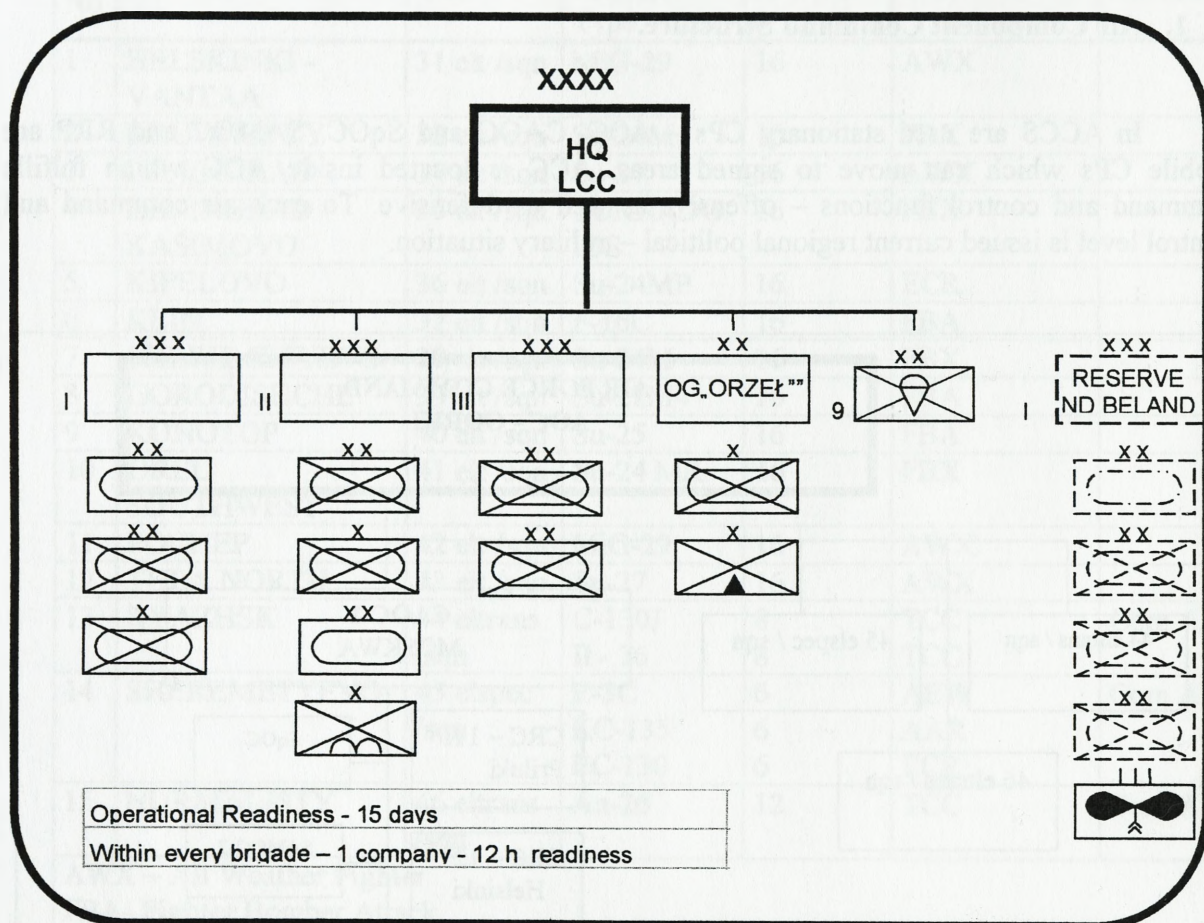
*Annex 1. Part 2.5.*

**THE ARMED FORCES - BELAND**

- Appendix:
1. Land Component BELAND
  2. Air Component BELAND
  3. Navy Component BELAND

Appendix 1. Annex 1. Part 2.5.

LAND COMPONENT BELAND



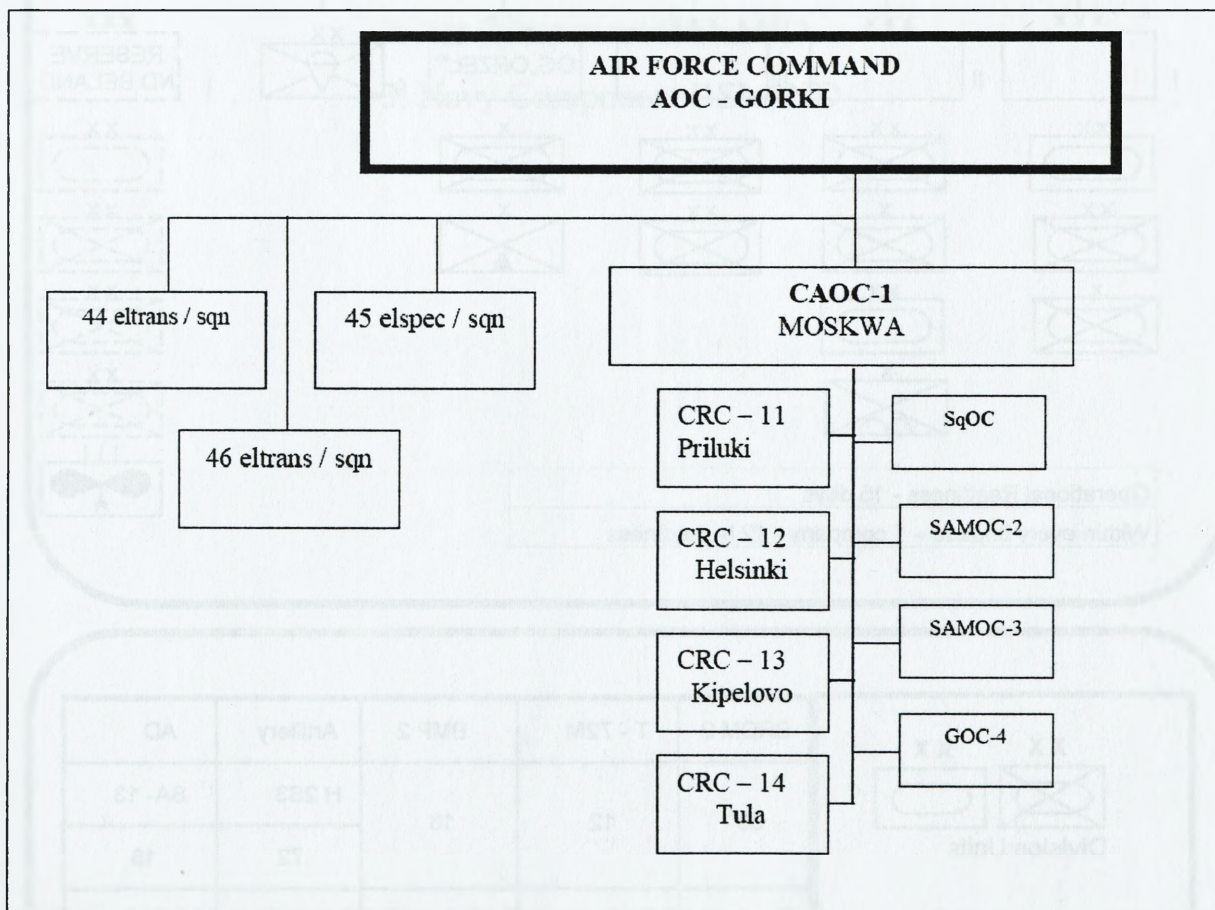
	BRDM 2	T - 72M	BMP 2	Artillery	AD
<div style="display: flex; justify-content: space-around;"> <div style="text-align: center;"> <p>XX</p> </div> <div style="text-align: center;"> <p>XX</p> </div> </div> <p>Division Units</p>				H 2S3	SA- 13
	36	12	16	72	18
<p>X</p>				H 2S1	ZSU 23-4
	10	93	60	24	24
<p>X</p>				H 2S1	ZSU 23-4
	10	31	200	24	24

*Appendix 2. Annex 1. Part 2.5.*

**Air Force - BELAND**

**1. Air Component Command Structure.**

In ACCS are used stationary CPs – AOC, CAOC and SqOC. SAMOC and RRP are mobile CPs which can move to signed areas. ACC is located inside AOC which fulfills command and control functions – offensive as well as defensive. To each air command and control level is issued current regional political – military situation.



The ASACS in peacetime is based on stationary radar posts so called “backbone” deployed in cities: Doneck, Priluki, Sescha, Karmanovo, Firovo, Sankt Petersburg, Helsinki, Kruunupyy, Tambov, Dobrynskoye, Kipelovo, Girvas, Rautavaara, Tula. CAOC in Moscow has as reserve 8 x mobile radar battalion. Each battalion consists of 4 x RRP.

2. Tactical Aviation.

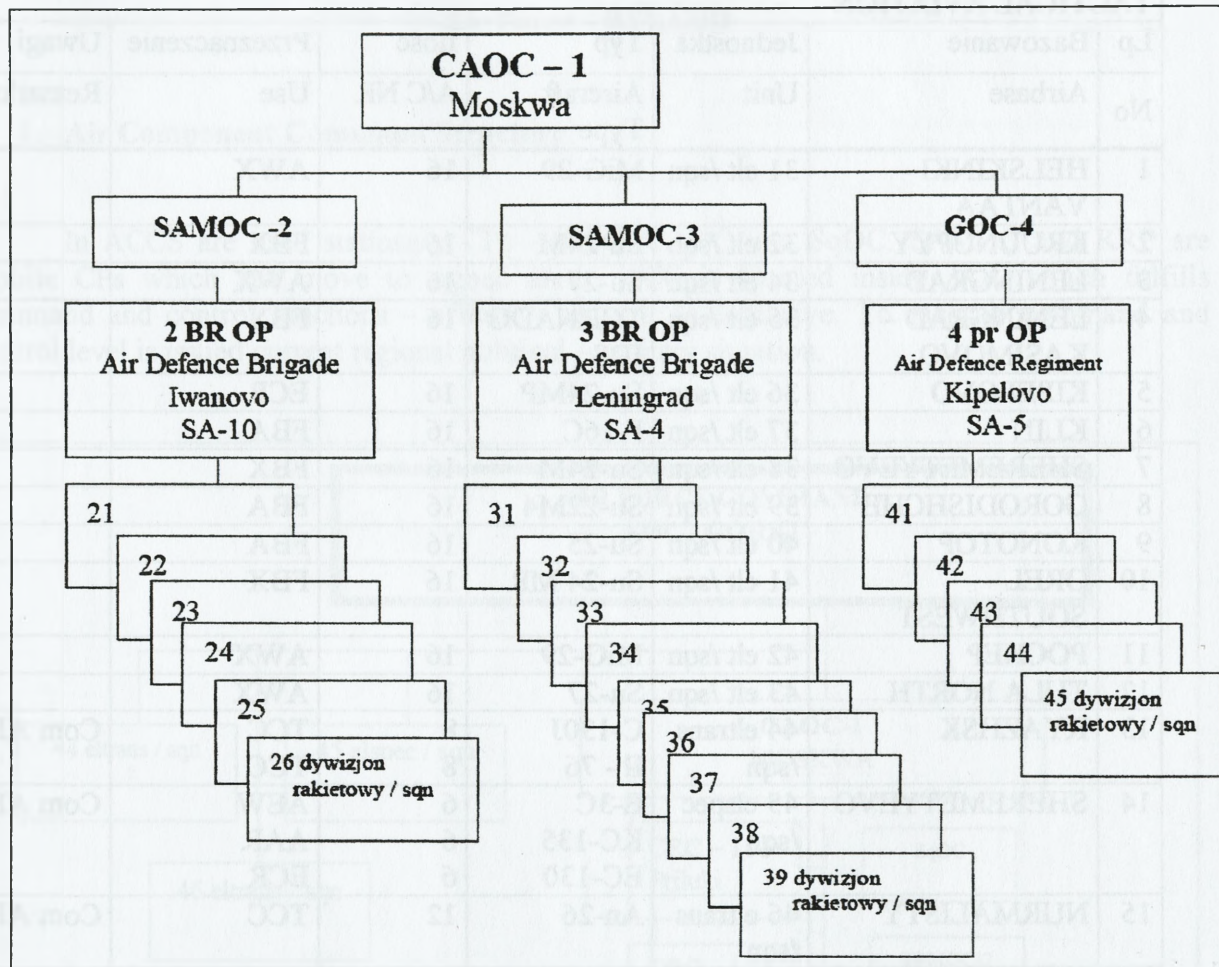
LOTNICTWO TAKTYCZNE TACTICAL AVIATION						
Lp	Bazowanie	Jednostka	Typ	Ilość	Przeznaczenie	Uwagi
No	Airbase	Unit	Aircraft Type	A/C NR	Use	Remarks
1	HELSKINKI - VANTAA	31 elt /sqn	MiG-29	16	AWX	
2	KRUUNUPYY	32 elt /sqn	Su-24M	16	FBX	
3	LENINGRAD	34 elt /sqn	Su-27	16	AWX	
4	LENINGRAD - KASIMOVO	35 elt /sqn	TORNADO IDS	16	FBX	
5	KIPELOVO	36 elt /sqn	Su-24MP	16	ECR	
6	KLIN	37 elt /sqn	F-16C	16	FBA	
7	SHEREMETYEVO	38 elt /sqn	Su-24M	16	FBX	
8	GORODISHCHE	39 elt /sqn	Su-22M4	16	FBA	
9	KONOTOP	40 elt /sqn	Su-25	16	FBA	
10	OREL SOUTHWEST	41 elt /sqn	Su-24 MR	16	FBX	
11	POCHEP	42 elt /sqn	MiG-29	16	AWX	
12	TULA NORTH	43 elt /sqn	Su-27	16	AWX	
13	RYAZHSK	44 eltrans /sqn	C-130J Ił - 76	8 8	TCC TCC	Com AF
14	SHEREMETYEVO	45 elspec /sqn	E-3C KC-135 EC-130	6 6 6	AEW AAR ECR	Com AF
15	NURMALISTY	46 eltrans /sqn	An-26	12	TCC	Com AF

AWX – All Weather Fighter  
FBA- Fighter Bomber Attack  
FBX – Fighter Bomber All Weather  
TRX – Tactical Reconnaissance All Weather  
TCC – Transport Cargo  
ECR - Electronic Combat and Recce  
AAR – Air to Air Refuelling  
AEW – Airborne Early Warning

Attention / Uwaga:

Air bases net / Bazy lotnicze – See ANNEX / patrz ANNEX

**3. GBAD**



**4. BELAND. Air Forces logistic situation.**

BELAND Air Forces logistic support is provided within national armed forces logistic support system. According to the situation of Air Force units assignment to fulfill tasks on the JAPALAN territory. They use from civil – military resources within the framework of HNS.

Air Forces logistic resources provide the continuity combat tasks till 30 days regarding limits of ammunition assets. National economy and military agreement with JAPALA allows to provide the effective further supplying.

Aircraft combat readiness approx. 70% and GBAD 85%.

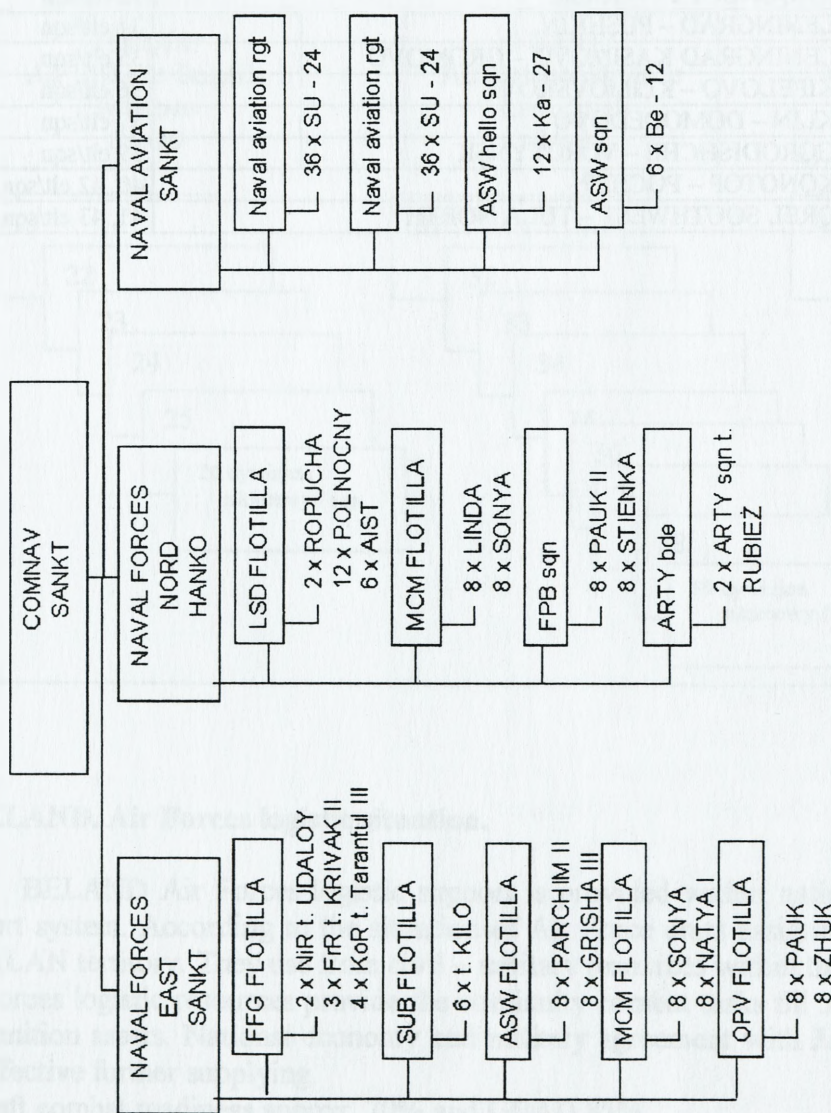
**5. BELAND. Air bases net.**

Lp. No	Baza Unit	Polozenie Location	Uwagi Remarks
1.	1 Air Base	RYAZHSK	44 eltrans/sqn
2.	2 Air Base	NURMALISTY	46 elspec/sqn
3.	3 Air Base	SHEREMETYEVO - SHCHELKOVO	38 elt, 45 elspec/sqn
4.	4 Air Base	HELSINKI-VANTAA - RAYSKALA	31 elt/sqn
5.	5 Air Base	KRUUNUPYY - VAASA	32 elt/sqn
6.	6 Air Base	LENINGRAD - PUSHKIN	34 elt/sqn
7.	7 Air Base	LENINGRAD KASIMOVO - GROMOVO	35 elt/sqn
8.	8 Air Base	KIPELOVO - KLIMOVSKOYE	36 elt/sqn
9.	9 Air Base	KLIN - DOMODEDOVO	37 elt/sqn
10.	10 Air Base	GORODISHCHE - VOROTYNSK	39 elt/sqn
11.	11 Air Base	KONOTOP - POCHEP	40, 42 elt/sqn
12.	12 Air Base	OREL SOUTHWEST - TULA NORTH	41, 43 elt/sqn

Appendix 3. Annex 1. Part 2.5.

NAVY BELAND

STRUCTURE AND COMPOSITION



**LOCATION:**

- a). Naval Base Sankt: LSD FLOTILLA, MCM FLOTILLA, ARTY bde, FPB sqn, ASW air sqn
- b). Naval Base Hanko: FFG FLOTILLA, SUB FLOTILLA, ASW FLOTILLA, MCM FLOTILLA, FPB FLOTILLA, ASW hello sqn, NAVAL AVIATION rgt -- 2

**PERSONNEL: 67.000**

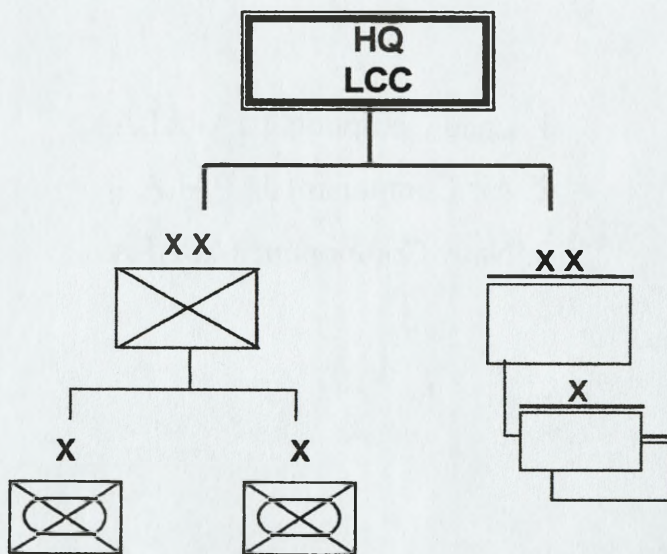
*Annex 2. Part 2.5.*

**THE ARMED FORCES - JAPALA**

- Appendix:
1. Land Component JAPALA
  2. Air Component JAPALA
  3. Navy Component JAPALA

*Appendix 1. Annex 2. Part 2.5.*

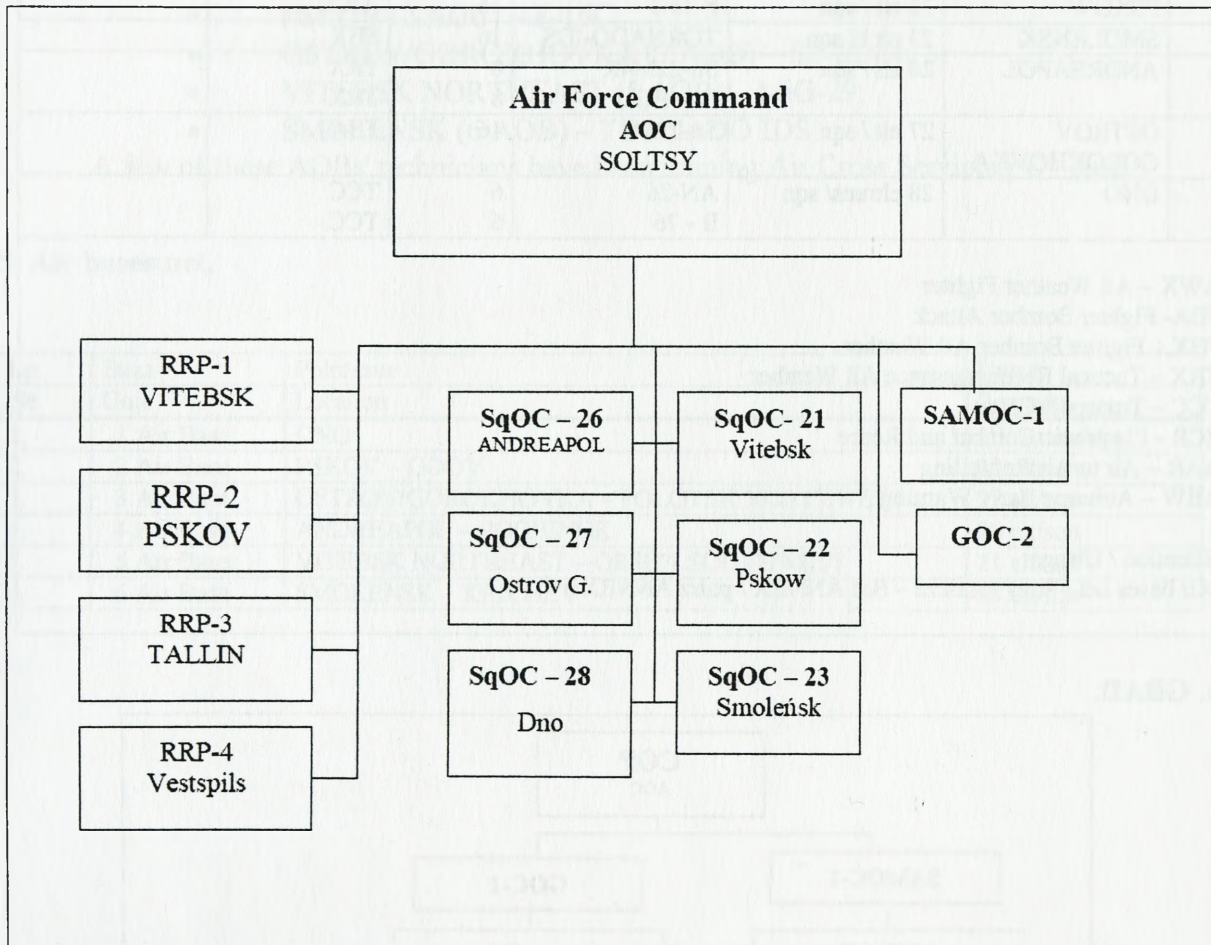
**LAND COMPONENT JAPALA**



## JAPALA – Air Force

### 1. Air Component Command Structure

In ACCS are used stationary CPs – AOC and SqOC. SAMOC and RRP are mobile CPs which can move to signed areas. ACC is located inside AOC which fulfills command and control (C2) functions – offensive as well as defensive. To each air command and control level is issued current regional political – military situation.



The JAPALAN ASACS is based on 4 x RRP directly under Air Operations Centre which has as reserve 2 x RRP.

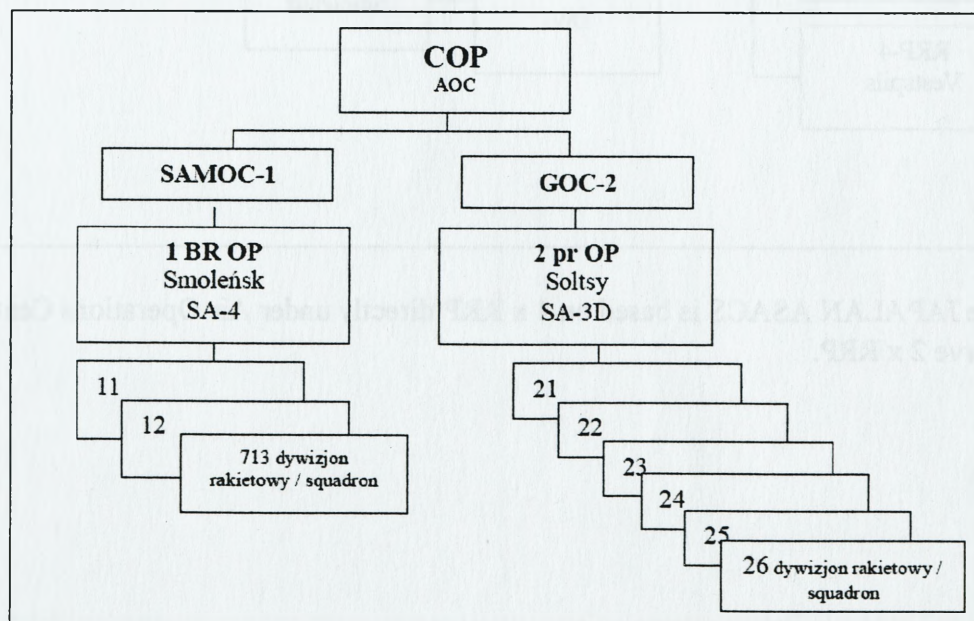
**2. Tactical Aviation.**

LOTNICTWO TAKTYCZNE TACTICAL AVIATION						
Lp	Bazowanie	Jednostka	Typ	Ilość	Przeznaczenie	Uwagi
No	Airbase	Unit	Aircraft Type	A/C NR	Use	Remarks
1	VITEBSK NORTHEAST	21 elt / sqn	MiG-29	16	AWX	
2	PSKOW	22 elt / sqn	F-16C	16	AWX	
3	SMOLENSK	23 elt b/ sqn	TORNADO-IDS	16	FBX	
4	ANDREAPOL	26 elt / sqn	Su-22M4R F-16A(R)	8 8	TRX TRX	
5	OSTROV GOROKHOVKA	27 elt / sqn	Su-22M4	16	FBA	
6	DNO	28 eltrans/ sqn	AN-26 Il - 76	6 6	TCC TCC	

AWX – All Weather Fighter  
FBA- Fighter Bomber Attack  
FBX – Fighter Bomber All Weather  
TRX – Tactical Reconnaissance All Weather  
TCC – Transport Cargo  
ECR - Electronic Combat and Recce  
AAR – Air to Air Refuelling  
AEW – Airborne Early Warning

Attention / Uwaga:  
Air bases net / Bazy lotnicze – See ANNEX / patrz ANNEX

**3. GBAD.**



#### 4. JAPALA Air Forces logistic situation.

JAPALA Air Forces logistic support is provided within national armed forces logistic support system.

Air Forces logistic assets ensure fulfilling combat tasks within 30 days regarding limits of air assets. The continuity of supplying is provided in accordance with agreement of military cooperation with BELAND. This agreement contains also common services within HNS.

Aircraft combat readiness approx. 70% and GBAD 90%.

AOBs are prepared to fulfill the role of transit AOBs for BELAND Air Forces:

- DNO (1 AOB) – I-76, An-26;
- PSKOV (2 AOB) – F-16C;
- OSTROV/GOROKHOVKA (3 AOB) – Su-22M4;
- VITEBSK NORTHEAST (5 AOB) – MiG-29;
- SMOLENSK (6 AOB) – TORNADO IDS.

A few of these AOBs' technicians have been training Air Cross Servicing C - level.

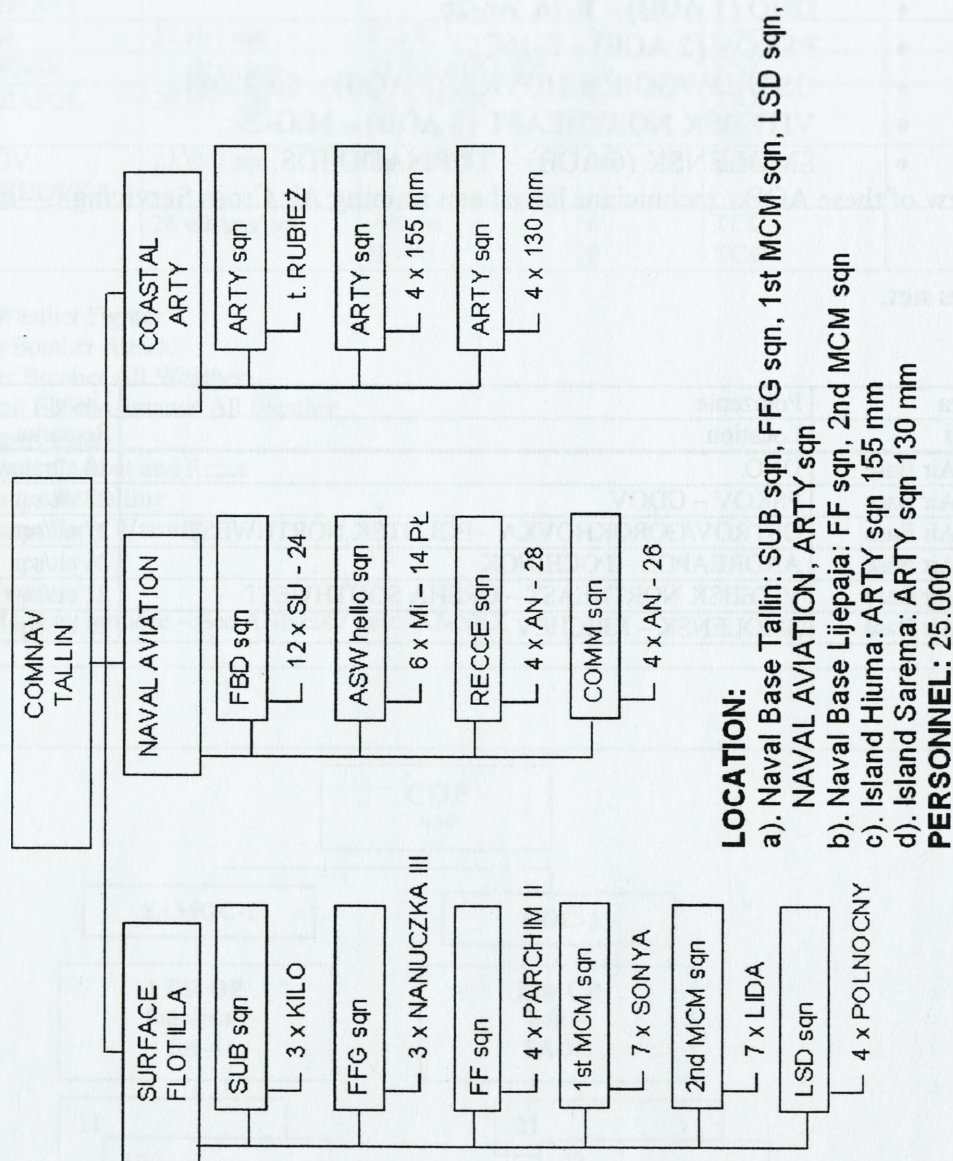
#### 5. Air bases net.

Lp. No	Baza Unit	Polozenie Location	Uwagi Remarks
1.	1 Air Base	DNO	28 eltrans/sqn
2.	2 Air Base	PSKOV – GDOV	22 elt/sqn
3.	3 Air Base	OSTROV/GOROKHOVKA – POLOTSK NORTHWEST	27 elt/sqn
4.	4 Air Base	ANDREAPOL – POCHINOK	26 elt/sqn
5.	5 Air Base	VITEBSK NORTHEAST – ORSHA SOUTHWEST	21 elt/sqn
6.	6 Air Base	SMOLENSK – KRICHEV	23 elt/sqn

Appendix 3. Annex 2. Part 2.5.

NAVY - JAPALA

STRUCTURE AND COMPOSITION

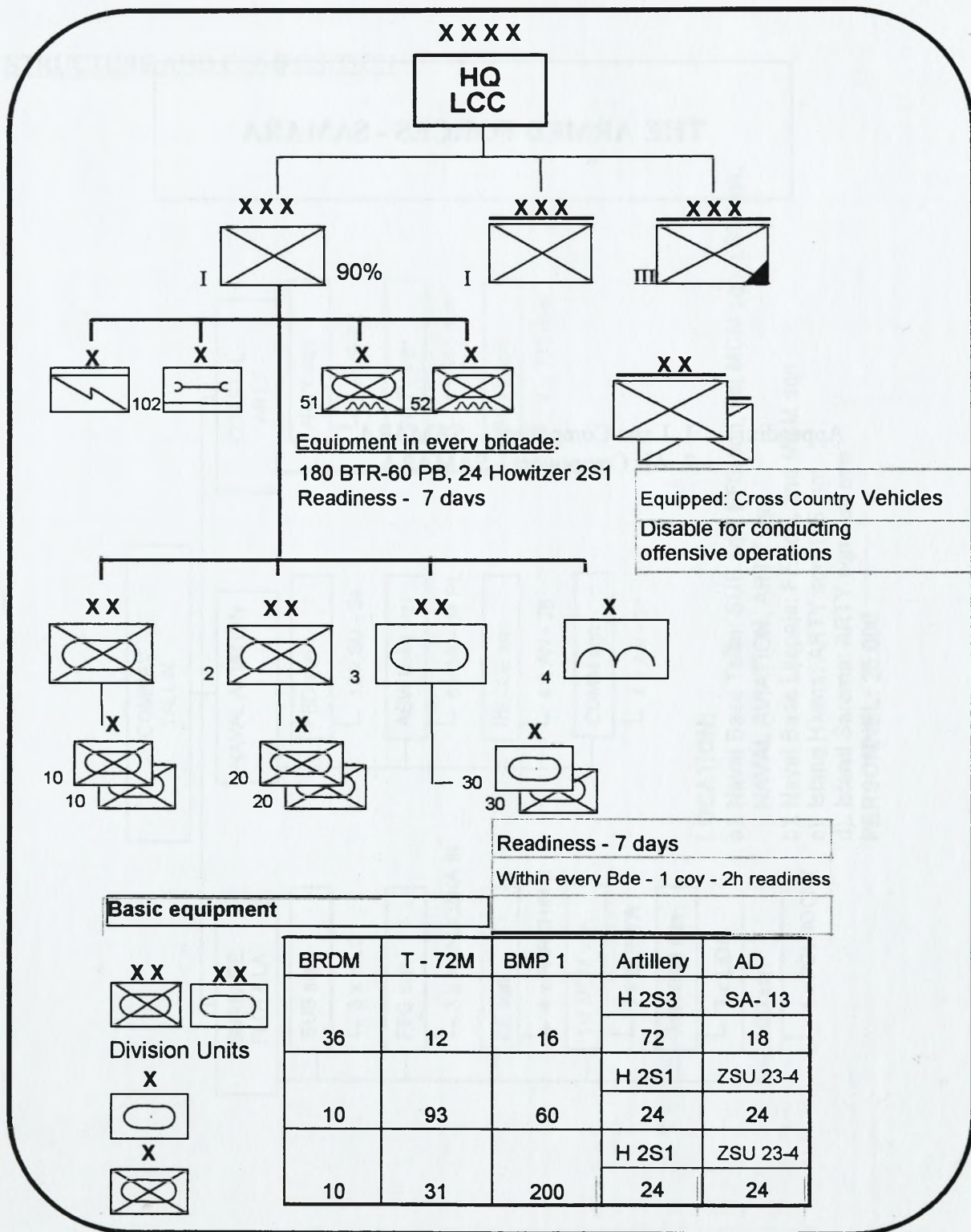


**THE ARMED FORCES - SAMARA**

- Appendix:
1. Land Component – SAMARA
  2. Air Component - SAMARA

Appendix 1. Annex 3. Part 2.5.

LAND COMPONENT SAMARA

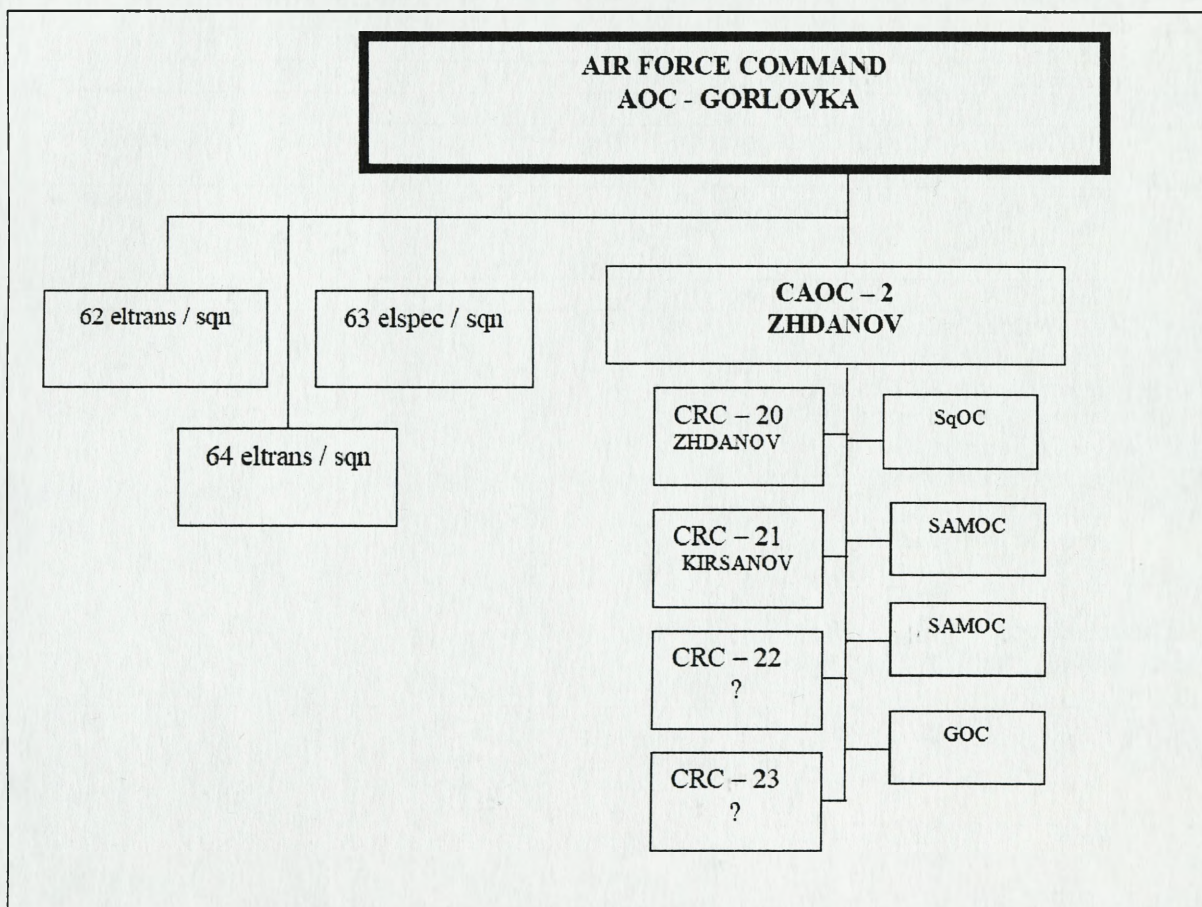


*Appendix 2. Annex 3. Part 2.5.*

### SAMARA – Air Force

#### 1. Air Component Command Structure.

In ACCS are used stationary CPs – AOC, CAOC and SqOC. SAMOC and RRP are mobile CPs which can move to signed areas. To each air command and control level is issued current regional political – military situation. To command and control AD are used stationary CRCs.

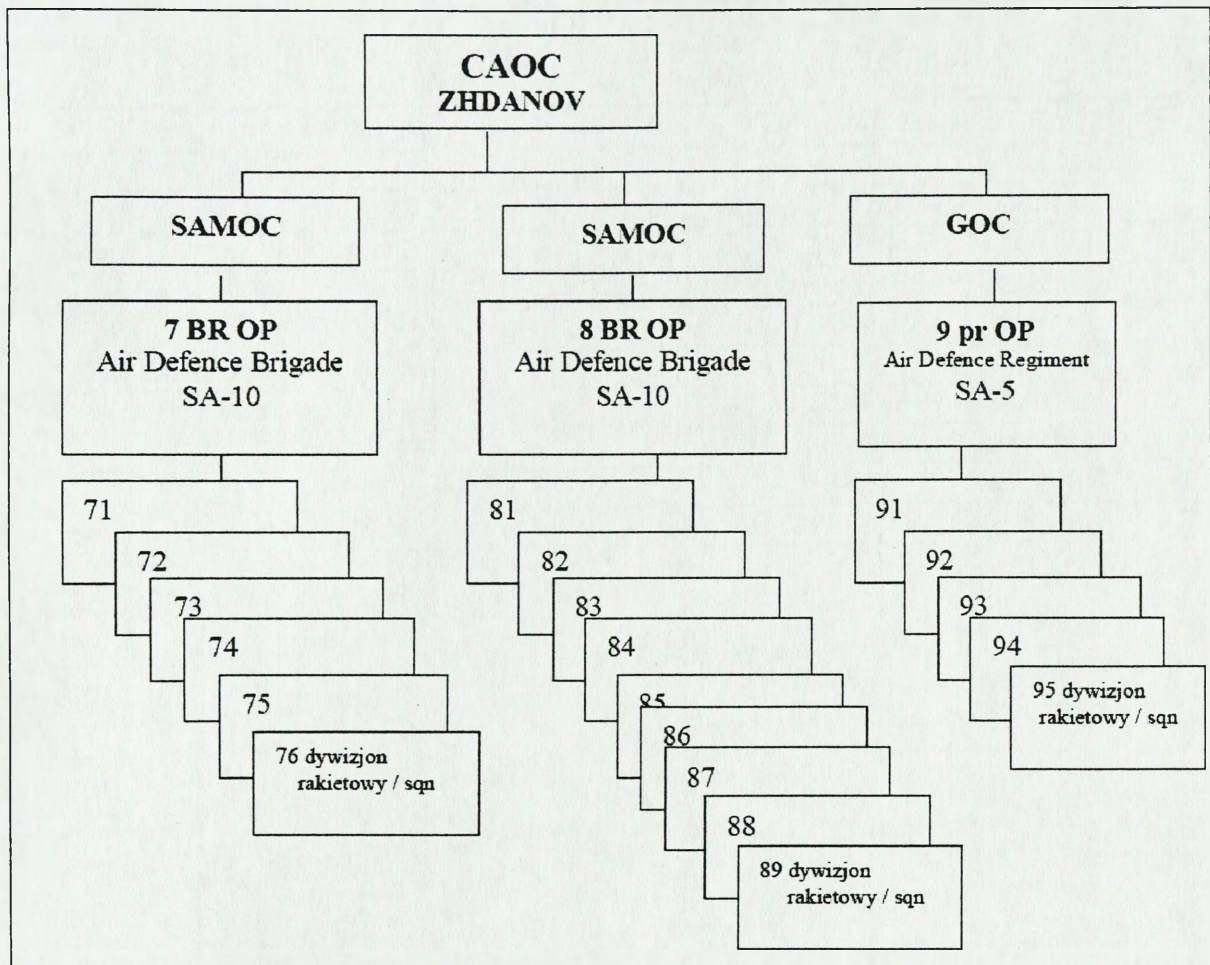


ASACS in peacetime is based on stationary radar posts so called “backbone” deployed in cities: MELITOPOL, KHORTITSA, KHARKOV, ?, TAMBOV, LYAMBIR. CAOC ZHDANOV there is a reserve as 10 x mobile radar battalion. Each battalion consists of 4 x RRP.

**2. Tactical Aviation.**

LOTNICTWO TAKTYCZNE TACTICAL AVIATION						
Lp	Bazowanie	Jednostka	Typ	Ilość	Przeznaczenie	Uwagi
No	Airbase	Unit	Aircraft Type	A/C NR	Use	Remarks
1	BERDYANSK	50 elt /sqn	MiG-29	18	AWX	
2	TAGANROG	51 elt /sqn	Su-24M	18	FBX	
3	KRAMATORSK	52 elt /sqn	Su-27	18	AWX	
4		53elt /sqn	TORNADO IDS	18	FBX	
5	BELYY KOLODEZ	54 elt /sqn	Su-24MP	18	ECR	
6	KIRSANOV	55 elt /sqn	F-16C	18	FBA	
7	LYAMBIR	56 elt /sqn	Su-24M	18	FBX	
8	SASOVO	57 elt /sqn	Su-22M4	18	FBA	
9	SASOVO	58 elt /sqn	Su-25	18	FBA	
10	SAROVA	59 elt /sqn	Su-24 MR	18	FBX	
11	MORSHANSK	60 elt /sqn	MiG-29	18	AWX	
12	TAMBOV	61 elt /sqn	Su-27	18	AWX	
13	GORLOVKA	62 eltrans /sqn	C-130J H - 76	12 12	TCC TCC	Com AF
14	GORLOVKA	63 elspec /sqn	E-3C KC-135 EC-130	8 8 8	AEW AAR ECR	Com AF
15	RTISHCHEW	64 eltrans /sqn	An-26	18	TCC	Com AF
<p>AWX – All Weather Fighter            FBA- Fighter Bomber Attack            FBX – Fighter Bomber All Weather            TRX – Tactical Reconnaissance All Weather            TCC – Transport Cargo            ECR - Electronic Combat and Recce            AAR – Air to Air Refuelling            AEW – Airborne Early Warning</p> <p>Attention / Uwaga:            Air bases net / Bazy lotnicze – See ANNEX / patrz ANNEX</p>						

### 3. GBAD



### 4. SAMARA Forces logistic situation.

SAMARA Air Forces logistic support is provided within national armed forces logistic support system. According to the situation of Air Force units there is the assignment to fulfill tasks on the JAPALA and BELANDIAN territory. They use from civil – military resources within the framework of HNS.

Air Forces logistic resources provide the continuity combat tasks till 30 days regarding limits of ammunition assets. National economy and military agreement with JAPALA and BELAND allows to provide the effective further supplying.

Aircraft combat readiness approx. 80%, other 85%, GBAD 95%.

5. SAMARA air bases net.

No	Unit	Location	Remarks
1.	1 Air Base	BERDYANSK	50 elt/sqn
2.	2 Air Base	TAGANROG	51 elt/sqn
3.	3 Air Base	KRAMATORSK	52 elt/sqn
4.	4 Air Base	KRAMATORSK	53 elt/sqn
5.	5 Air Base	BELYY KOLODEZ	54 elt/sqn
6.	6 Air Base	KIRSANOV	55 elt/sqn
7.	7 Air Base	LYAMBIR - RTISHCHEW	56 elt/sqn, 64 eltrans/sqn
8.	8 Air Base	SASOVO - SAROVA	57 elt/sqn, 58 elt/sqn, 59 elt/sqn
9.	9 Air Base	MORSHANSK	60 elt/sqn
10.	10 Air Base	TAMBOV	61 elt/sqn
11.	11 Air Base	GORLOVKA	62 eltrans/sqn, 63 elspec/sqn

Wydrukowano w 20 egz.  
Egz. 1-20 – archiwum biblioteki ogólnej  
Wyk. ppłk Roman KWEĆKA  
Druk AON zam. nr 455/WW/

