



56

NATIONAL DEFENCE UNIVERSITY
STRATEGIC - DEFENSIVE DEPARTMENT
2004

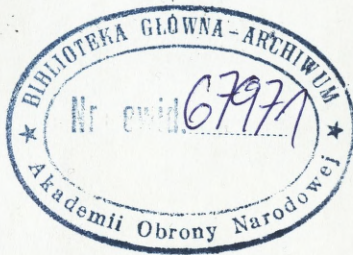
-EXERCISE-

EXERCISE COMMON MISSION
SET 1



20

Egz. nr ...



**SET 1
ORGANISATION**

LIST OF CONTENTS

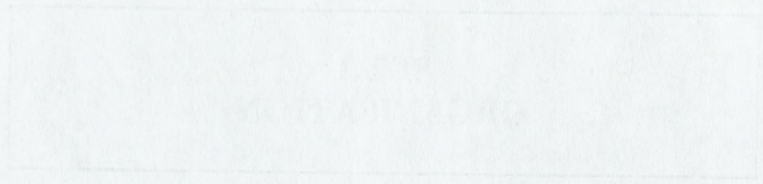
- Part 1.1. THE AIM OF THE EXERCISE
- Part 1.2. ASSUMPTIONS OF THE EXERCISE
- Part 1.3. ORGANISATIONAL STRUCTURE
- Part 1.4. DRAFT TIMETABLE OF THE EXERCISE
- Part 1.5. TASKS FOR TRAINING CELLS
- Part 1.6. ADDITIONAL INFORMATIONS



-EXERCISE-

67971

4/21/14



3

**PART 1.1.
THE AIM OF THE EXERCISE**

TO DEVELOP KNOWLEDGE AND ABILITIES OF THE STUDENTS OF THE POSTGRADUATE COURSES AND STUDENTS OF MASTERS STUDIES IN PLANNING PROCEDURES OF THE USE OF COMBINED JOINT TASK FORCES (CJTF)

TO VERIFY SELECTED ASPECTS OF THEORETIC ASSUMPTIONS OF THE PLANNING OF OPERATIONS CONDUCTED BY CJTF

PART 1.2. ASSUMPTIONS OF THE EXERCISE

The political background should state a fictitious situation in Europe, in which a state exists that intends to join such a structure, and on the other hand, the countries not interested (reactionary) to the change of political and military situation. The area and situation of the exercise should allow (enforce) viewing the problem in three aspects: air, land and sea, as well as such issues as CIMIC and HNS.

Congruently with the UN article, the Alliance may prevent the escalation of a conflict, and activity options, which the students must learn, will help to stop the crisis situation and make the realisation of the Alliance's objectives possible.

The situation, which is politically questionable, should state only a background of the discussion. In the moment of the exercise's beginning, the students must be aware of the clear tasks. Therefore, they should obtain a special initial directive, including the conclusions of the situation's evaluation and particular tasks to be solved. To summarise, the trainees will have to answer (solve) the following questions (problems):

- In what way may the particular Alliance forces work (what will be its goal)?
- What forces are there supposed to be used?
- In what way may these forces find themselves in the area of operation (deployed through air, sea and land)?

The exercise should be conducted in two phases: in the first phase an extension of an armament and preparation of rooms and students will be executed. In the main stage of the exercise, which will be divided into two phases, the students' task will be to elaborate various possibilities to act, precision of forces needed for their execution, and ways of their displacement to the area of the planned operation.

The actions of exercising teams may lead to the presentation of the operations options to the Regional Commander (of the joined forces), which will assure the end state. The main focus should be laid on military actions conducted in effort of supplying the political and economical decisions within the realm of international crisis management. The course participants will also consider, what political (diplomatic) as well as economical decisions would be substantiated from the military point of view.

Military operations options will be presented during decision briefings that will close the active phase of the exercise.

The preparation and execution of the exercise will be based on the planning situation with features of higher probability, as far as its materialisation is concerned, bigger than any other from the set of the probable situations. The above mentioned condition, as can be assumed, is fulfilled by scenario of unclear, vague political conflict, i.e. conflict, in which one of subjects, part of the conflict, is not a state or group of states. It can be a transnational terror-

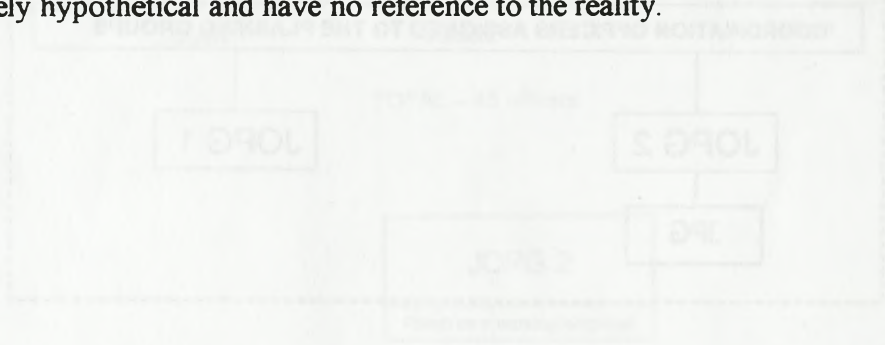
ist organisation, also criminal and economic in character, supported or even controlled by single state or group of states acting with specific goals and interests. Objectives, for which a transnational criminal organisation and supporting state (group of states) start asymmetric warfare with other states (group of states) would be different than classical military objectives in conflicts between states.

Transnational criminal organisations can start asymmetric operations against state (group of states), which the following features can describe:

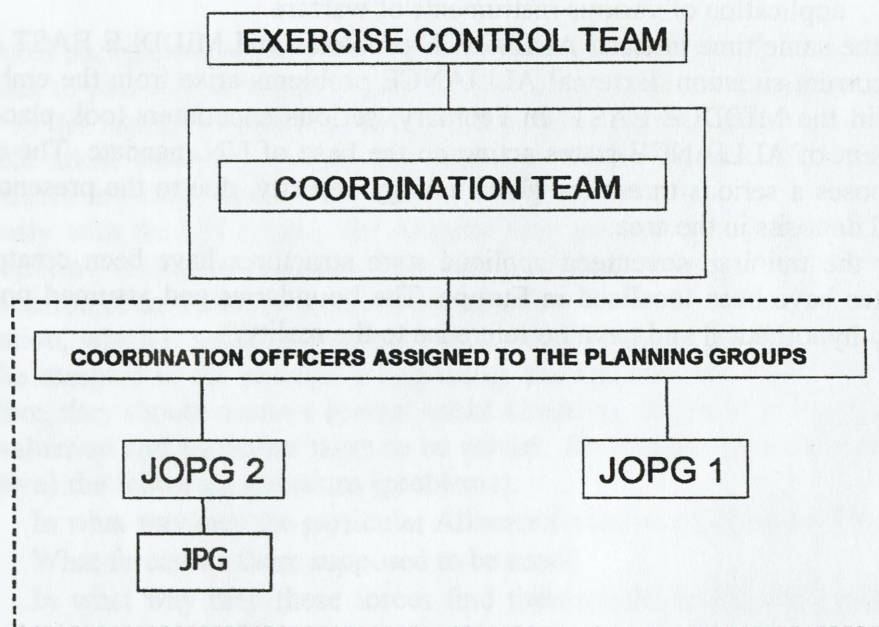
- particular theatre of operations (with no geographical and chronological continuity);
- no front line in the traditional sense of the battlefield;
- application of various instruments of warfare.

At the same time internal ALLIANCE problems and MIDDLE EAST conflict complicate the current situation. External ALLIANCE problems arise from the embitterment of the situation in the MIDDLE EAST. In February, serious encounters took place there with the involvement of ALLIANCE states acting on the base of UN mandate. The escalation of the conflict poses a serious threat for global energy security, due to the presence of the world's richest oil deposits in the area.

For the training, seventeen appliqué state structures have been created. Territorially, those states have been localised in Europe. The boundaries and assumed political structures are purely hypothetical and have no reference to the reality.



**PART 1.3.
ORGANISATIONAL STRUCTURE**



Planning Group is headed by chief JOPG

Joint planning staff (CJ5 Planners) is the basic element of the JOPG.

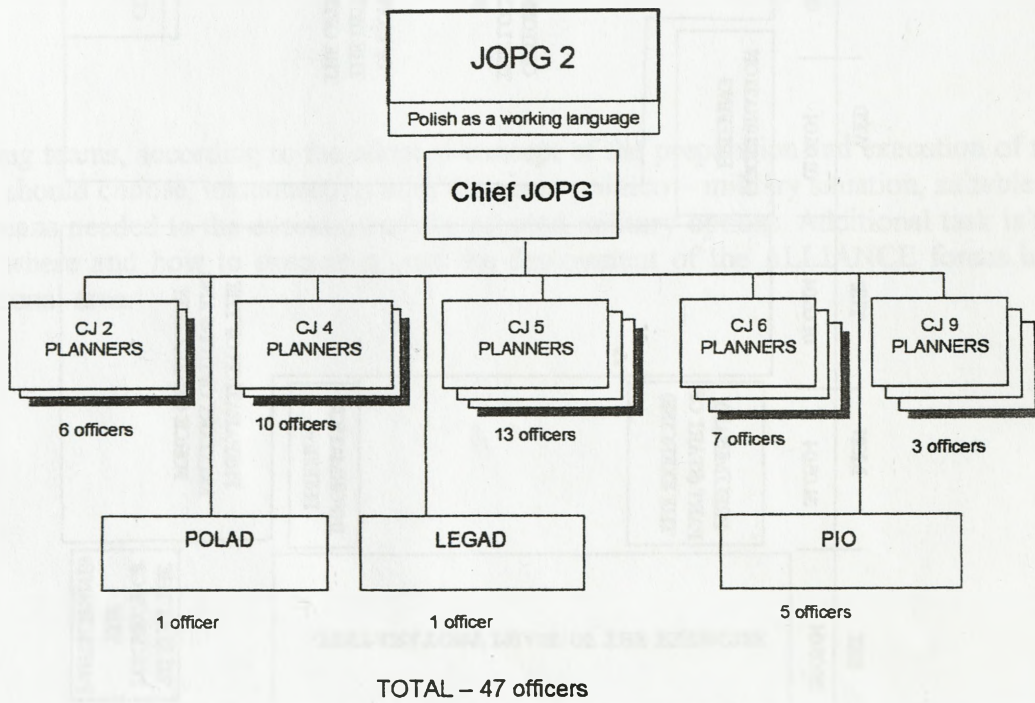
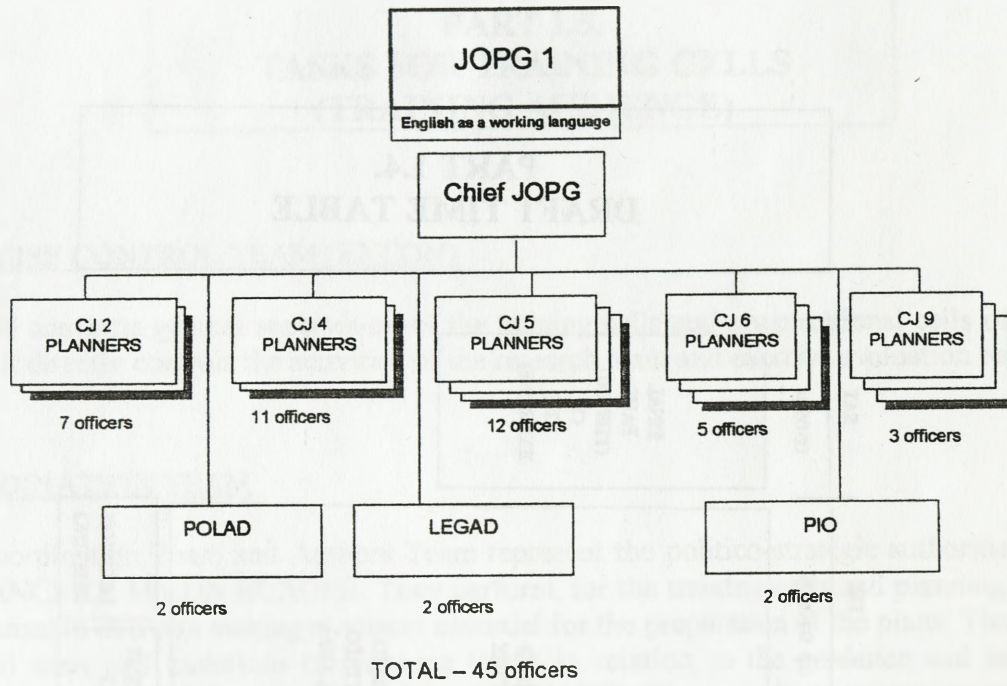
It consists of representatives from every level of command and specialized advisers.

JOPG has not received a permanent structure

Organizational structure is flexible and created according to the needs and character of the planned operation. Additionally, during the preparation of the operational plan, the representatives outside CJ5 are acting as liaison officers from the parent staff cells.

As a model solution, the Joint Operational Planning Group consists of:

- Chief JOPG;
- Coordination Team JOPG;
- From 6 to 10 planning officers CJ5;
- From 2 do 3 planning officers (reconnaissance)
- At least one representative from command areas: CJ1, CJ2, CJ4, CJ6, CJ8, CJ9, CJ-Engineer (ENGR), Public Information Office (PIO), LEGAD, Political Advisor (POLAD), Component Liaison Officers (LNOs). As usually, CJ3 is represented by several officers (CJ3, CJ3 Land, Air, Maritime, and JTMS).



**PART 1.4.
 DRAFT TIME TABLE**

TIME	SAT 29.05.04	MON 31.05.04	TUE 01.06.04	WED 02.06.04	THU 03.06.04	FRI 04.06.04	SAT 05.06.04
1	PREPARATORY PHASE OF THE EXERCISE	PRELIMINARY PART (START OF THE EXERCISE)		COORDINATION BRIEFING	OPTIONS RELATED TO THE LOCATION OF THE FORCES	OPTIONS RELATED TO THE DEPLOYMENT INTO THE OPERATIONAL AREA	FINAL PART (THE END OF THE EXERCISE)
2							
3		INFORMATION BRIEFING					
4							
5							
6							
7							
8		PREPARATION OF THE MILITARY OPTIONS AND FORCE GENERATION					
9	TIME AT THE DISCRETION OF THE PARTICIPANTS						
10					COORDINATION BRIEFING	DECISION BRIEFING	

**PART 1.5.
TASKS FOR TRAINING CELLS
(TRAINING AUDIENCE)**

EXERCISE CONTROL TEAM (EXCON)

EXCON conducts general supervision of the training cells and organizational cells of the exercise. It directly controls the activities of the research team and exercise evaluation team.

COORDINATION TEAM

The Coordination Team and Authors Team represent the politico-strategic authorities of the ALLIANCE COMMON EUROPE. They perform, for the training cells and planning groups, indispensable decision making elements essential for the preparation of the plans. They verify selected aims and intentions of planning teams in relation to the guidance and intentions adopted by the political authorities of the ALLIANCE. They conduct current assessment of the activities of the planning teams.

JOPG

Planning teams, according to the adopted concept of the preparation and execution of the exercise should choose, in connection with the given politico – military situation, suitable forces and means needed to the execution of the adopted military options. Additional task is to propose: where and how to execute it, and the deployment of the ALLIANCE forces into the operational area.

**PART 1.6.
ADDITIONAL INFORMATION**

DESIGNATORS OF THE COUNTRIES

BALTA	BA
BRYTA	BR
BURGIA	BU
HOWLAND	HO
IBERA	IB
LENDIA	LE
PANON	PA
SUMBIA	SU

BELAND	BE
SAMARA	SA
JAPALA	JA
POMORIA	PO
ADRIA	AD
CELTA	CE
KOLLA	KO
MONDA	MO
NORDIA	NO

LOCATION OF THE COMMAND STRUCTURES OF THE ALLIANCE
"SECURE EUROPE"

HQ	- DUON
JFC HQ NORTH	- LUBEKA
JFC HQ SOUTH	- TOURS
HQ ARRC	- RHEINDAHLEN
CAOC - 2	- DUNKIERQUE
AIR CC N-E	- ESSEN
CAOC - 1	- BERLIN
AIR CC S-W	- HAMBURG (KILBURG)

Wydrukowano w 20 egz.
Egz. 1-20 – archiwum biblioteki ogólnej
Wyk. ppłk Roman KWEĆKA
Druk AON zam. nr 454/WW/

